

# Deploying Microsoft Windows 2000 SP4 Update Rollup 1 on Dell PowerEdge Servers

To help administrators maintain the security and stability of Microsoft® Windows® 2000 systems, Microsoft has released Update Rollup 1 for Windows 2000 Service Pack 4 (SP4). This article provides recommendations for the deployment of SP4 Update Rollup 1 on Dell™ PowerEdge™ servers.

BY BHUSHAN GAVANKAR

## Related Categories:

*Change management*

*Dell OpenManage*

*Microsoft Windows*

*Operating system (OS)*

Visit [www.dell.com/powersolutions](http://www.dell.com/powersolutions) for the complete category index.

Microsoft Update Rollups enable administrators to help keep their systems secure. Administrators can build new system images without having to apply and track numerous hot fixes. Update Rollups typically require less predeployment testing than single hot fixes because the number of updates included is usually lower than the number included in a Service Pack, and Microsoft releases hot fixes on its Web site before combining them.

Update Rollup 1 for Microsoft Windows 2000 Service Pack 4 (SP4) contains security updates produced for Windows 2000 between June 26, 2003—the date SP4 was released—and April 30, 2005. The Update Rollup package includes several updates that are designed to increase the security of systems, improve their reliability, and reduce support costs. Individual hot fixes created since the release of Windows 2000 SP4 and not included in SP4 Update Rollup 1 are available as individual downloads from the Microsoft Web site.

## Deploying Update Rollup 1 for Windows 2000 SP4

The first and most important step in any deployment process is to evaluate and document the existing IT

infrastructure. Key items to document are the system BIOS, system and device firmware, device driver versions, applications, and network components. System administrators also should back up all critical data and check systems for spyware and other unwanted software prior to any upgrade. The latest BIOS, firmware, and drivers for Dell PowerEdge servers are available from the Dell Web site ([support.dell.com](http://support.dell.com)) or the Dell OpenManage™ software suite.

## Availability of SP4 Update Rollup 1

Administrators should note that Microsoft Windows 2000 Service Pack 4 Update Rollup 1 is not available as a Dell factory installation—it must be downloaded from the Microsoft Web site. To download SP4 Update Rollup 1, administrators can visit [www.microsoft.com/downloads/details.aspx?FamilyID=b54730cf-8850-4531-b52b-bf28b324c662&DisplayLang=en](http://www.microsoft.com/downloads/details.aspx?FamilyID=b54730cf-8850-4531-b52b-bf28b324c662&DisplayLang=en). A list of fixes included in SP4 Update Rollup 1 is available at [support.microsoft.com/kb/900345](http://support.microsoft.com/kb/900345).

## Installation options

To upgrade Microsoft Windows 2000 SP4, administrators can choose from the following options:

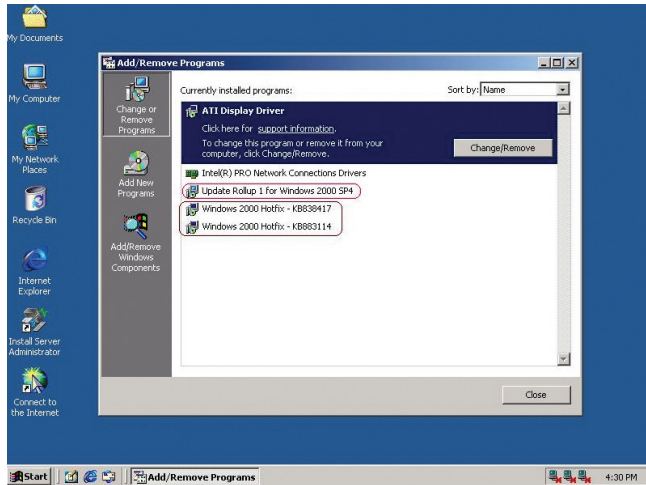


Figure 1. SP4 Update Rollup 1 and additional hot fixes in the Add/Remove Programs window

- Upgrade individual servers over the Internet using Microsoft Windows Update.
- Install the Update Rollup package from a network share.
- Automate the deployment process by using an enterprise software deployment tool such as Microsoft Systems Management Server 2003 (SMS 2003).

For administrators who wish to deploy SP4 Update Rollup 1 on a single Windows 2000–based server, the first method—installing the Update Rollup package directly from the Microsoft Windows Update Web site—is the simplest of the three options. Administrators who wish to install SP4 Update Rollup 1 on several servers running Windows 2000 may prefer installing the Update Rollup package from a network share.

Each of the first two methods can be time-consuming for enterprises that have many servers to upgrade. The third option—automating the installation process using the Microsoft SMS 2003 enterprise software deployment tool—is the preferred method for most mid-size and large enterprises. Many enterprise server management tools exist; however, SMS 2003 is designed to streamline deployment of software updates across a network.

### Dell OpenManage support for SP4 Update Rollup 1

The Dell OpenManage infrastructure is a systems management suite designed to provide proactive monitoring, diagnostics, notification, and remote access for Dell PowerEdge servers. All Dell OpenManage versions that support Microsoft Windows 2000 SP4 should provide support for SP4 Update Rollup 1. Dell recommends that administrators update the Dell OpenManage suite with the latest version, which is available at [support.dell.com](http://support.dell.com).

### Post-installation considerations

With any of the installation methods described in the preceding section, the system will recommend a reboot following installation of SP4 Update Rollup 1. After the reboot, a new line—“Update Rollup 1 for Windows 2000 SP4”—will be listed in the Add/Remove Programs windows. Administrators should note the following:

- Individual hot fixes that were previously applied to the system and are included in SP4 Update Rollup 1 will no longer appear in Add/Remove Programs.
- Hot fixes released by Microsoft after April 30, 2005 and those that are not included in SP4 Update Rollup 1 will be displayed in Add/Remove Programs.

Figure 1 displays the Add/Remove Programs window showing SP4 Update Rollup 1 and additional hot fixes.

### Uninstalling SP4 Update Rollup 1

SP4 Update Rollup 1 can be uninstalled at any time using the Add/Remove Programs interactive help utility. A reboot is required after SP4 Update Rollup 1 is uninstalled. After the reboot, individual fixes that were removed from the Add/Remove Programs window during installation of SP4 Update Rollup 1 should again be present.

### Keeping Windows 2000–based Dell servers up-to-date

Microsoft provides Update Rollup 1 for Microsoft Windows 2000 SP4 to help enterprises running Windows 2000–based systems keep their systems secure and stable. Administrators can use the guidelines presented in this article to update Windows 2000–based Dell PowerEdge servers in their environments. [↗](#)

**Bhushan Gavankar** is a senior engineering analyst in the Server Operating Systems Engineering department in the Dell Product Group—Enterprise Software Development. Bhushan has a B.E. in Electronics and Telecommunications Engineering from Mumbai University in India.

#### FOR MORE INFORMATION

##### Update Rollup 1 for Windows 2000 Service Pack 4:

[www.microsoft.com/windows2000/server/evaluation/news/bulletins/rollup.asp](http://www.microsoft.com/windows2000/server/evaluation/news/bulletins/rollup.asp)

##### Dell OpenManage:

[www.dell.com/openmanage](http://www.dell.com/openmanage)