

ATI FireGL Accelerators from AMD Deliver the Graphics Power on Dell Precision Workstations

From 3D animation and industrial design to advanced medical diagnostics, ATI™ FireGL™ graphics accelerators from AMD are designed to handle the most complex 3D models, the largest data sets, and the highest-definition textures to meet the wide-ranging needs of today's graphics-intensive application environments.

Today, many production studios rely on workstation graphics to create 3D animation and cinematic special effects. The automotive industry turns to high-performance graphics for designing and rendering innovative vehicles and running simulations to help ensure they meet critical design requirements in performance, handling, aerodynamics, comfort, and safety. Architects depend on workstation graphics to create digitally modeled homes that enable prospective buyers to do a virtual walk-through before construction begins. Health care professionals demand flawless image fidelity in medical imaging applications in order to make critical diagnoses.



Lamborghini image designed and visualized using ICEM software. © 2007 ICEM. Reprinted with permission.

ATI FireGL graphics horsepower fuels innovative automotive designs



ATI FireGL powers virtual architecture tours in real time

ATI FireGL workstation graphics accelerators from AMD are built on a scalable, ultra-threaded graphics architecture and innovative ring bus memory system designed to handle the most complex 3D models, the largest data sets, and the highest-definition textures used today. This efficient design approach to the family of FireGL products allows users to select an accelerator based on price and performance requirements without compromising capabilities or functionality. Featuring a 10-bit display pipeline and high dynamic range (HDR) 16-bit per RGB color component output, ATI FireGL accelerators are designed to produce over 1 billion colors for vibrant and accurate visual fidelity. This incredible image quality enables the precision required for specialized markets like visual simulation and medical imaging.

Architectural image designed and visualized using Bentley MicroStation. © 2007 Bentley Systems. Reprinted with permission.



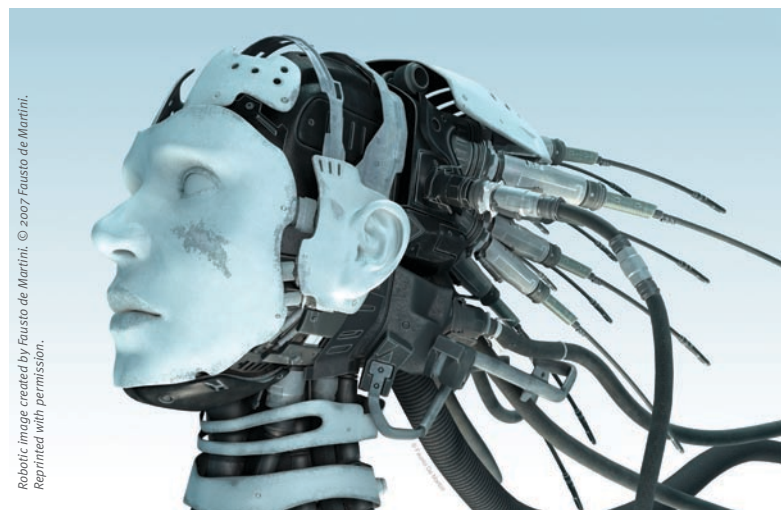
ATI FireGL V7200 workstation graphics accelerator from AMD

With world-class performance and image quality, it's no wonder designers, animators, and engineers rely on ATI FireGL graphics accelerators. IT managers and system administrators can also benefit substantially from the ATI FireGL accelerators' low total cost of ownership. The single, unified drivers that support the entire FireGL product family help reduce costs by simplifying system administration and maintenance for new software releases and updates. IT managers have the flexibility to select from a range of FireGL products—from entry-level to ultra-high-end—based on staff, application, and budget needs, knowing that one driver package supports the entire product line. Also, the unified driver architecture streamlines validation with professional applications across the entire FireGL product family. ATI FireGL accelerators are thoroughly tested and certified with major computer-aided design (CAD) and digital content creation (DCC) applications¹ to help ensure optimum performance and compatibility.

In addition, the FireGL drivers include an application detection feature that is designed to automatically recognize and load optimal profile settings for a specific application and to provide fully optimized driver performance when running multiple applications simultaneously. Plus, ATI offers direct customer access to a dedicated workstation technical support team should the need arise. These key support components provide peace of mind and help ensure that ATI FireGL accelerators are reliable and easy to maintain, enhancing productivity and minimizing the potential for downtime.

For outstanding high-end graphics performance, Dell Precision™ workstations are available with the ATI FireGL V7200 (256 MB) graphics accelerator, which features two Dual Link outputs that can drive two 30-inch Dell UltraSharp™ wide-screen monitors at up to 2560 × 1600 resolution each, producing a massive multi-monitor display for enhanced productivity. Providing exceptional value without compromising features or image quality, Dell Precision workstations can also be configured with the ATI FireGL V3400 (128 MB) graphics accelerator, which features two display outputs, including one Dual Link output to drive ultra-high resolutions on a single 30-inch Dell UltraSharp flat-panel monitor.

For more information on why ATI FireGL is a smart choice for your next Dell Precision workstation, visit www.dell.com/precision.



Robotic image created by Fausto de Martini. © 2007 Fausto de Martini. Reprinted with permission.

ATI FireGL delivers high-end rendering for 3D artists and animators

¹For a list of ATI FireGL certifications, visit ati.amd.com/products/workstation/ISVCertsFireGL.pdf.