



By Perumal Raja P.  
Manjunath Narayanan

# AN OVERVIEW OF MICROSOFT WINDOWS SMALL BUSINESS SERVER 2008 ON DELL SERVERS

Designed specifically to help meet the needs of small businesses, the Microsoft® Windows® Small Business Server 2008 platform provides an all-in-one server solution that incorporates many key features used by large organizations while offering cost efficiency, simplified data security, and enhanced productivity.

**M**icrosoft Windows Small Business Server 2008 is the latest release in the Windows Small Business Server family, and introduces multiple enhancements designed specifically for small businesses. It provides many of the features used by large organizations—including e-mail, Internet connectivity, Microsoft Windows SharePoint® Services software, internal Web sites, remote access, mobile device support, file and printer sharing, backup, and restore—and is designed for cost efficiency, simplified data security, and enhanced productivity.

Dell supports Windows Small Business Server 2008 on an array of eighth-generation and later Dell™ PowerEdge™ server platforms. To help continue meeting the needs of small businesses, Dell has also added support for rack-mounted servers. This article discusses the available options for Windows Small Business Server 2008 preinstallation on Dell PowerEdge servers, processes for migrating to Windows Small Business Server 2008, and integration with the Dell OpenManage™ suite.

## MICROSOFT WINDOWS SMALL BUSINESS SERVER 2008 EDITIONS

Windows Small Business Server 2008 is based on the Microsoft Windows Server® 2008 Standard

x64 Edition OS, and is available in Standard and Premium Editions. The Standard Edition can be used with a single server; the Premium Edition requires two servers.

Windows Small Business Server 2008 Standard Edition includes the following:

- Microsoft Windows Server 2008 Standard x64 Edition
- Microsoft Exchange Server 2007 Standard Edition
- Microsoft Windows SharePoint Services 3.0
- Microsoft Windows Server Update Services 3.0
- Microsoft Forefront™ Security for Exchange Server security and management services<sup>1</sup>
- Microsoft Windows Live™ OneCare™ for Server protection software and services<sup>2</sup>

Windows Small Business Server 2008 Premium Edition includes all of the Standard Edition components as well as the following:

- Microsoft Windows Server 2008 Standard Edition or Standard x64 Edition for installation on the second server
- Microsoft SQL Server® 2008 Standard Edition database platform

### Related Categories:

Microsoft  
Microsoft Windows Server 2008  
Operating system (OS)  
Visit [DELL.COM/PowerSolutions](http://DELL.COM/PowerSolutions)  
for the complete category index.

<sup>1,2</sup> Forefront Security for Exchange Server and Windows Live OneCare for Server are trial versions with a 120-day grace period. If administrators decide to activate the software, they must purchase the appropriate licenses from Microsoft.

**“Preinstallation helps ensure that the deployment includes the latest Dell-approved drivers and Microsoft security and performance updates.”**

- Microsoft Hyper-V™ virtualization support on the second server
- Microsoft Terminal Services in Application mode on the second server

**PREINSTALLATION OPTIONS FOR DELL POWEREDGE SERVERS**

Dell provides three options for ordering Windows Small Business Server 2008 with Dell PowerEdge servers:

- PowerEdge server with Windows Small Business Server 2008 Standard Edition preinstalled
- PowerEdge server with Windows Small Business Server 2008 Standard Edition preinstalled on a single server with included Premium Edition DVDs
- PowerEdge server with Windows Small Business Server 2008 Standard Edition preinstalled on the first server and Windows Server 2008 Standard x64 Edition preinstalled on a second server as part of the Premium Edition

The first option is typically suitable for environments hosting the Microsoft Active Directory® directory service, e-mail systems, internal Web sites, backup and restore systems, and other features that are part of Windows Small Business Server 2008 Standard Edition. The second and third options are typically suitable for environments that require SQL Server and a separate server to host a line-of-business application. The second option is also useful for organizations that have an existing supported server that they can use as a second server with Windows Small Business Server 2008 Premium Edition. After receiving the server with the

Standard Edition software preinstalled, administrators can use the Premium Edition DVDs and the Dell Systems Build and Update Utility to deploy the Premium Edition OS on the existing server.

With the third option, organizations can order both servers preinstalled with the OS. Dell factory installs the first server with Windows Small Business Server 2008 Standard Edition and the second server with Windows Server 2008 Standard x64 Edition, and includes the 32-bit Windows Server 2008 Standard Edition DVD. Organizations running 32-bit applications can use the 32-bit Windows Server 2008 Standard Edition OS on an additional server as part of a premium stock-keeping unit (SKU), which is included as part of the second and third options.

These preinstallations offer several advantages. For example, preinstallation

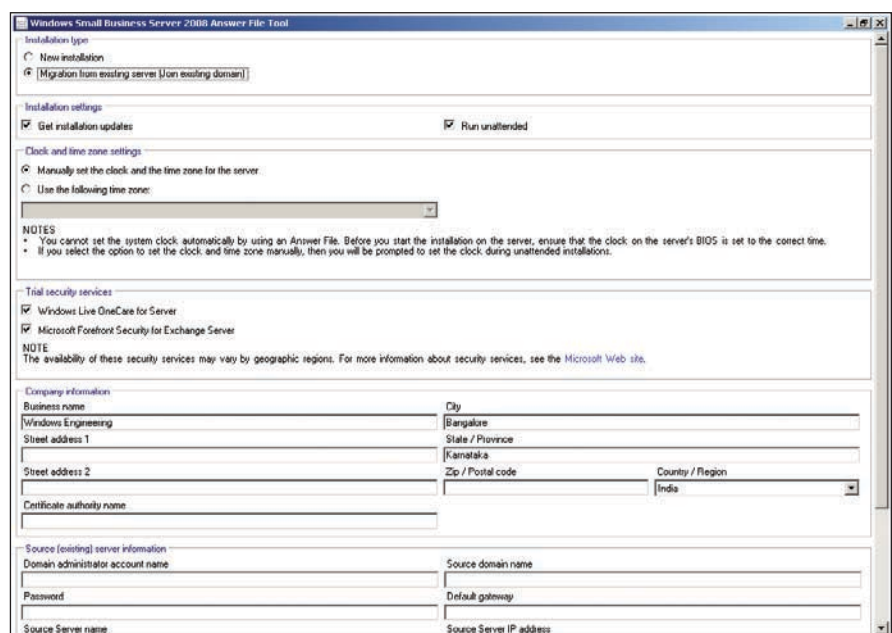
helps save time on OS installation and driver updates, and helps ensure that the deployment includes the latest Dell-approved drivers and Microsoft security and performance updates.

The Dell Small and Medium Business (SMB) Advisor tool, available at [DELL.COM/SBS2008](http://DELL.COM/SBS2008), can help organizations select the appropriate server and OS based on a series of questions about their environment. The tool also enables them to order the recommended system to help simplify the purchase process.

**WIZARD-BASED MIGRATION AND MANUAL MIGRATION**

Windows Small Business Server 2008 does not support in-place upgrades from legacy operating systems; instead, administrators must perform a migration to Windows Small Business Server 2008. Windows Small Business Server 2008 supports two methods for migration: wizard-based migration and manual migration.

Administrators planning to migrate from an existing Windows Small Business Server 2003 deployment to a new PowerEdge server preinstalled with Windows Small Business Server 2008



**Figure 1.** Answer file creation for wizard-based migration to Microsoft Windows Small Business Server 2008

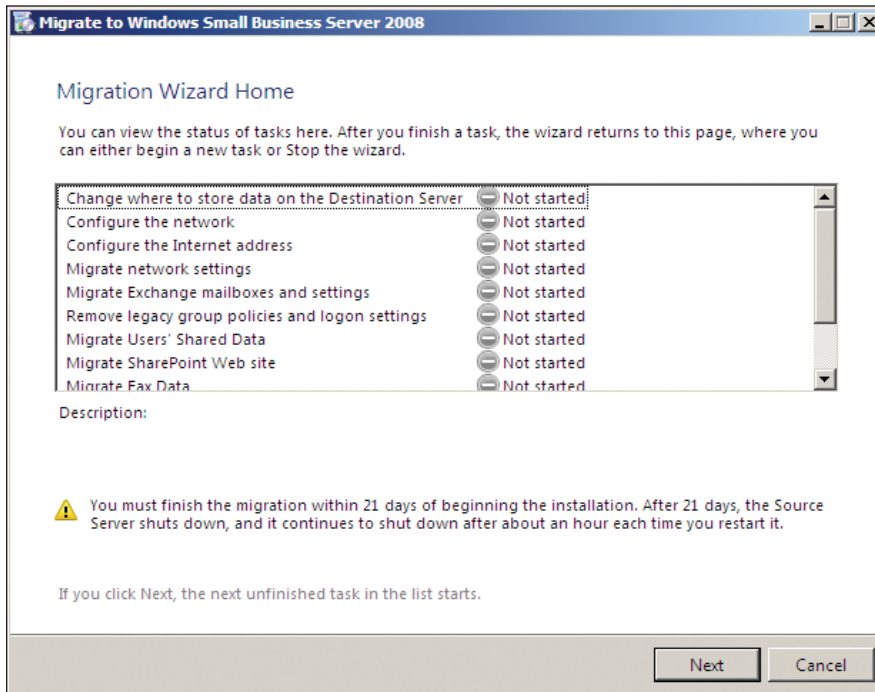


Figure 2. Microsoft Windows Small Business Server 2008 Migration Wizard

can take advantage of the Migration Wizard included as part of the installation media. This tool first creates an interactive answer file (see Figure 1), then migrates information related to Active Directory, Domain Name System (DNS), Dynamic Host Configuration Protocol (DHCP), and user settings to the new server. With minimal intervention, administrators can also migrate Exchange mailbox, SharePoint, and user data to the new server as well (see Figure 2). Figure 3 lists the prerequisites for wizard-based migration from different existing platforms.<sup>3</sup>

To perform a manual migration, administrators must create a backup of user and application data from Windows Small Business Server 2003, then restore it after they have completed a clean installation of Windows Small Business Server 2008 on the existing server. Administrators should ensure that their existing server meets the minimum requirement to run Windows Small Business Server 2008 effectively.<sup>4</sup>

During manual migration, administrators can use the Microsoft Windows NT® Backup utility—included with Windows Small Business Server 2003 and available from the Microsoft Web site—or a third-party backup application to back up application and user data. If they use the NT Backup utility, they must download the Windows NT Backup - Restore utility to

restore the backup on Windows Small Business Server 2008. However, because of significant design and architectural changes in Windows Small Business Server 2008, administrators cannot use this utility to restore the system state, Microsoft Active Directory database, or Exchange Information Store on Windows Small Business Server 2008.

Windows Small Business Server 2008 uses the same Dell driver set as Windows Server 2008. Administrators can download these drivers from the Dell support Web site at [support.dell.com](http://support.dell.com).

## INTEGRATION WITH DELL OPENMANAGE

Windows Small Business Server 2008 is supported with Dell OpenManage 5.5. Administrators can use Dell OpenManage to perform proactive monitoring of the system state, generate notifications, and provide remote access for Dell systems, as well as to upgrade drivers and firmware, run diagnostic tests, and perform other systems management tasks.

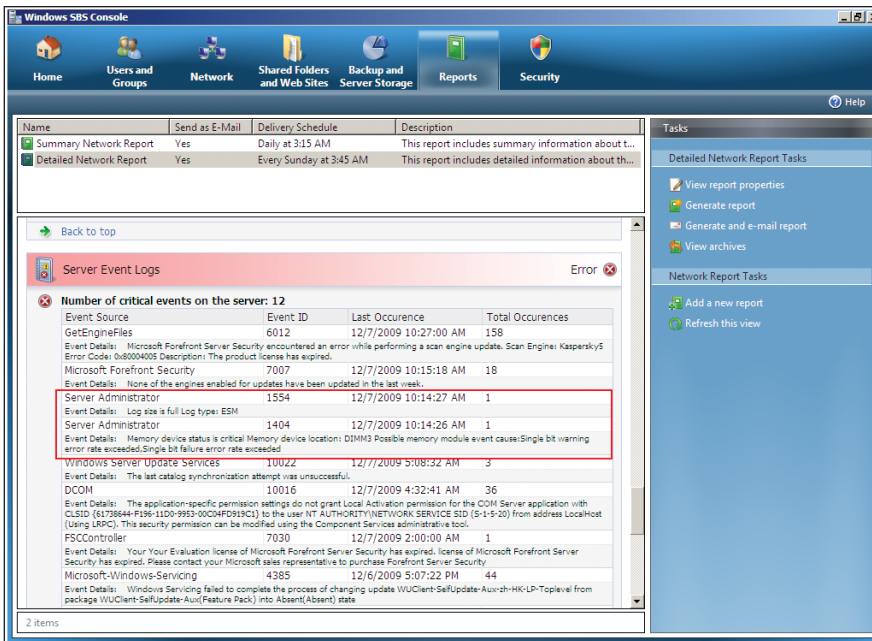
Windows Small Business Server 2008 introduces a feature that enables critical OS and application error events to be retrieved from the system event log and included in a consolidated report. Administrators can periodically generate

Existing OS	Minimum component requirements in existing environment
Windows Small Business Server 2003	<ul style="list-style-type: none"> <li>■ Windows Small Business Server 2003 with Service Pack 1 (SP1)</li> <li>■ Windows Server 2003 with SP2</li> <li>■ Exchange Server 2003 with SP2</li> <li>■ Windows SharePoint Services 2.0 with SP3</li> <li>■ Microsoft XML Core Services (MSXML) 6.0 with SP1</li> <li>■ .NET Framework 2.0</li> <li>■ SQL Server Management Studio Express with SP2</li> </ul>
Windows Server 2003 Standard Edition without Exchange Server 2003 in the domain	<ul style="list-style-type: none"> <li>■ Windows Server 2003 with SP2</li> <li>■ MSXML 6.0 with SP1</li> <li>■ .NET Framework 2.0</li> </ul>
Windows Server 2003 Standard Edition with Exchange Server 2003 in the domain	<ul style="list-style-type: none"> <li>■ Windows Server 2003 with SP2</li> <li>■ Exchange Server 2003 with SP2</li> <li>■ MSXML 6.0 with SP1</li> <li>■ .NET Framework 2.0</li> </ul>

Figure 3. Prerequisites for wizard-based migration to Microsoft Windows Small Business Server 2008

<sup>3</sup> For more information on wizard-based migration, visit [technet.microsoft.com/en-us/library/cc546034.aspx](http://technet.microsoft.com/en-us/library/cc546034.aspx).

<sup>4</sup> For minimum and recommended system requirements, visit [www.microsoft.com/sbs/en/us/system-requirements.aspx](http://www.microsoft.com/sbs/en/us/system-requirements.aspx).



**Figure 4.** Critical hardware error events from Dell OpenManage in a Microsoft Windows Small Business Server 2008 report

reports and archive them for future reference or analysis. Using Dell OpenManage enables critical Dell hardware error events to be included in this report (see Figure 4).

**SIMPLIFIED SMALL BUSINESS COMPUTING**

Microsoft Windows Small Business Server 2008 is designed to help meet the needs of small businesses, providing an integrated, all-in-one server solution. Deploying this OS on Dell PowerEdge servers can help these businesses create a secure, productive IT environment that provides many of the features used by large organizations in a cost-effective way.

**Perumal Raja P.** is a senior engineering analyst on the Server OS Engineering team at the Dell Bangalore Development Center. Perumal has a B.Tech. in electronics and communication from Pondicherry University.

**Manjunath Narayanan** is a senior engineering analyst on the Server OS Engineering team at the Dell Bangalore Development Center. Manjunath has a diploma in Computer Science from the Board of Technical Education, Karnataka.

**MORE**  
**ONLINE**  
DELL.COM/PowerSolutions

**QUICK LINKS**

**Microsoft Windows Small Business Server 2008:**  
[www.microsoft.com/sbs](http://www.microsoft.com/sbs)  
[technet.microsoft.com/en-us/library/cc514417.aspx](http://technet.microsoft.com/en-us/library/cc514417.aspx)

**Dell and Microsoft Windows Small Business Server 2008:**  
[DELL.COM/SBS2008](http://DELL.COM/SBS2008)