

# Dell and Red Hat® Certification Programs

Maximize Your Potential...Maximize the Value of Your IT Investments

## Benefits of Red Hat certification:

- Provides useful metrics of individual skills and competencies with Red Hat Enterprise Linux, the largest-selling distribution of Linux.
- Helps to maximize an individual's potential by offering IT professionals the ability to earn higher salaries.
- With detailed, performance-based assessments and comprehensive, hands-on training, Red Hat training and certification is highly regarded within the IT profession.

*Red Hat Certified Engineer is slated as the "crown-jewel" of the Linux certifications<sup>1</sup>, and was ranked number one for overall educational quality according to a survey conducted in 2002 by Certification Magazine of 3,939 IT professionals.<sup>2</sup>*



## Certification Made Easy

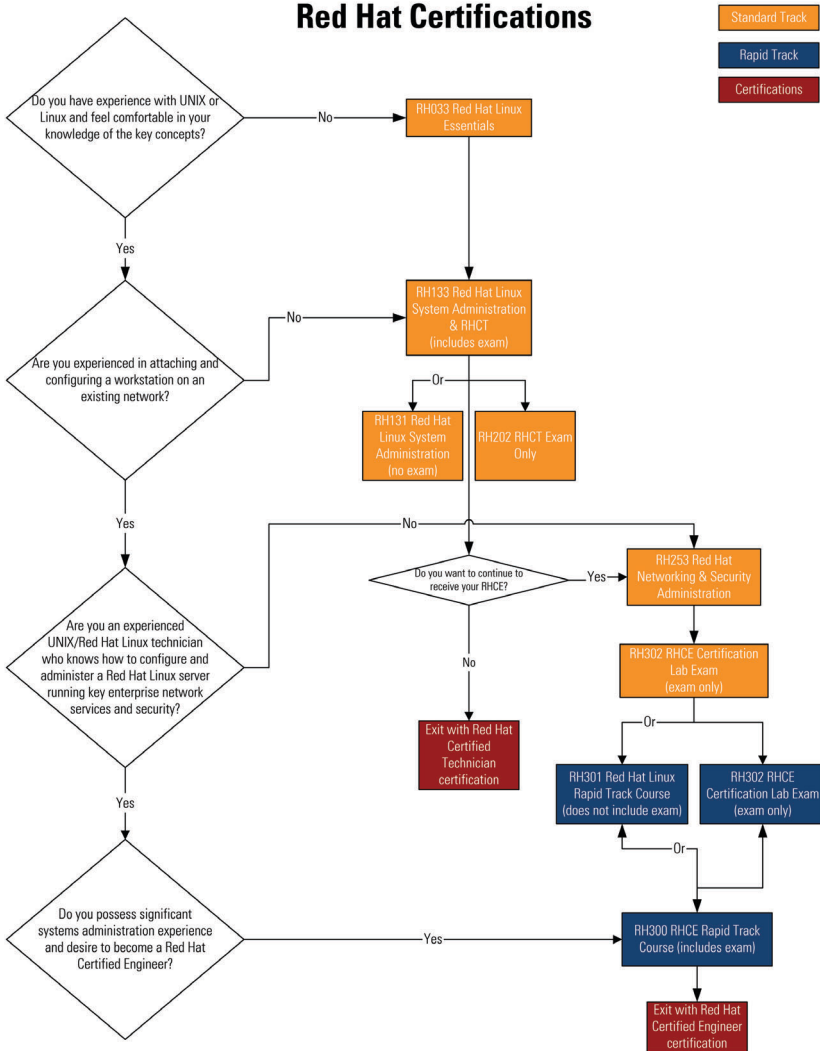
As the adoption and deployment of Linux grows, so does the demand for Red Hat certified Linux experts to manage this technology. Whether your IT department is looking to administer a Red Hat Enterprise Linux server for core networking services, write new device drivers, or develop port applications, hands-on training has become an industry necessity. And, as the saying goes, time is money, and having only one channel to go through for all your system, training, and certification needs is the key to efficiency.

That's why Dell Training & Certification now provides you a single point of contact for purchasing training that can lead to Red Hat Certified Technician (RHCT) and Red Hat Certified Engineer (RHCE) certifications. Dell servers are one of the leading platforms for Red Hat Enterprise Linux installations, and now you can maximize the value of your IT investment with these Red Hat certification courses and exams, which combine key concepts of Linux with thorough, hands-on experience building and managing Red Hat Enterprise Linux solutions. RHCTs and RHCEs must pass challenging, performance-based examinations, validating the candidate's ability to correctly set-up and manage Linux servers on an existing network and/or configure and administer a Red Hat Enterprise Linux server running production network services and security. The RHCE and RHCT certificates are becoming a benchmark in demonstrating preparedness for professional responsibilities at two critical levels of Red Hat Enterprise Linux systems administration.

Certification made easy. Easy as **DELL**™

Visit [www.dell.com/training/redhat](http://www.dell.com/training/redhat) for more information.

## Red Hat Certifications



## Two Certification Programs

- **Red Hat Certified Technician:** The goal of RHCT certification is to prepare IT professionals at the technician level to be able to install, configure, attach, and support *Red Hat* Enterprise Linux systems on an existing production network. This certification serves as a building block for the *Red Hat Certified Engineer* certification and is ideal for those transitioning to Linux from non-UNIX OSs, or who want to prove their competencies at a midway point on the way to RHCE. Courses within the RHCT certification program include *RH033 Red Hat Linux Essentials* and *RH133 Red Hat Linux Systems Administration*, followed by a performance-based half-day exam.
- **Red Hat Certified Engineer:** RHCE certification is aimed at knowledgeable Linux or UNIX users who already possess significant systems administration experience. The program consists of two tracks, standard and rapid. The standard track includes the courses covered in the RHCT certification as well as *RH253 Red Hat Linux Networking and Security Administration*, while the rapid track consists of the *RH300 RHCE Rapid Track* course. RHCE certification requires passing a challenging, performance-based one-day exam.

The *Red Hat Certified Technician* and *Red Hat Certified Engineer* programs offer IT professionals the knowledge and skills required to set-up and manage Enterprise Linux servers and systems for mission-critical commercial and business roles, including: Internet server, web server, database server, MTA server, ISP, DNS server, firewalls, web proxies, file and print server, departmental server, technical workstations, and development platform. By offering these certifications through Dell Training & Certification, having a single source of accountability for your system, training, and certification needs is now "easy as Dell."

Please accept our invitation to learn about Red Hat certifications through Dell Training & Certification by contacting your Dell representative or any of the following:

Website: [www.dell.com/training/redhat](http://www.dell.com/training/redhat)  
 Email: [US\\_Training@Dell.com](mailto:US_Training@Dell.com)  
 Phone: 1.866.360.3506 (US and Canada only)



redhat  
 PREMIER  
 PARTNER

Certification made easy. Easy as **DELL™**

Visit [www.dell.com/training/redhat](http://www.dell.com/training/redhat) for more information.

Dell cannot be responsible for errors in typography or photography.

<sup>1</sup> RHCE Essentials, Richard Shanks, CertCities.com, February 23, 2001. See <http://certcities.com/editorial/exams/story.asp?EditorialsID=21>

<sup>2</sup> Certification Training: Real Results, Real Value, Tim Sosbe, Certification Magazine, January 2002. See [http://www.certmag.com/issues/jan02/feature\\_sosbe.cfm](http://www.certmag.com/issues/jan02/feature_sosbe.cfm)

Dell and the Dell logo are trademarks of Dell, Inc. *Red Hat* and the *Red Hat* logo are registered trademarks of *Red Hat*, Inc. Other trademarks or trade names may be used in this document to refer to either the entities claiming the marks and names or their products. Dell disclaims proprietary interest in the marks and names of others. Printed in U.S.A. ©Copyright 2003 Dell, Inc. All rights reserved. Reproduction in any manner whatsoever without the express written permission of Dell, Inc. is strictly forbidden.