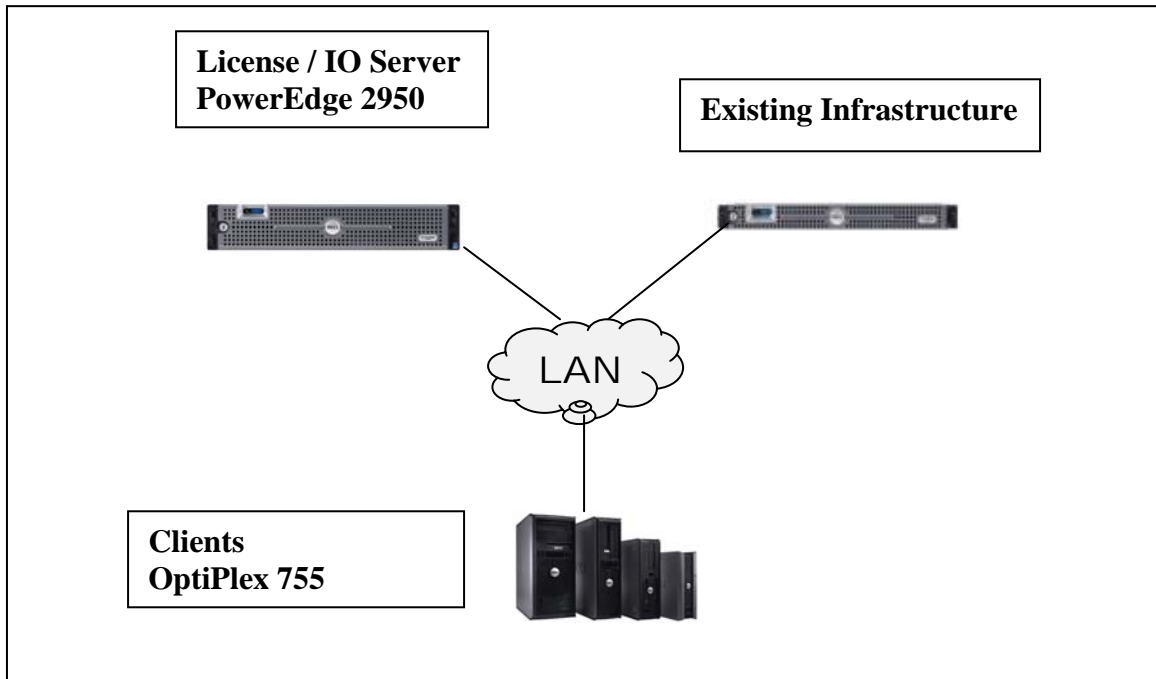


Dell Flexible Computing: On-Demand Desktop Streaming

Validated Solution Components and Reference Architecture
February 2008

Standalone Deployment

Standalone deployments can be the most cost effective solution per client, and are for small to medium deployments.



License/IO Server:
Dell™ PowerEdge™ 2950

Software:
Microsoft® Windows Server® 2003 R2 Standard or Enterprise Edition (32-bit)
Citrix® Provisioning Server for Desktops 4.5

External Storage:
None

Client Platforms:
Dell OptiPlex™ 755
Dell OptiPlex 755 (diskless)

Streamed Operating Systems:
Microsoft Windows® XP Professional
Microsoft Windows XP Professional x64 Edition
Microsoft Windows Vista® Business 32

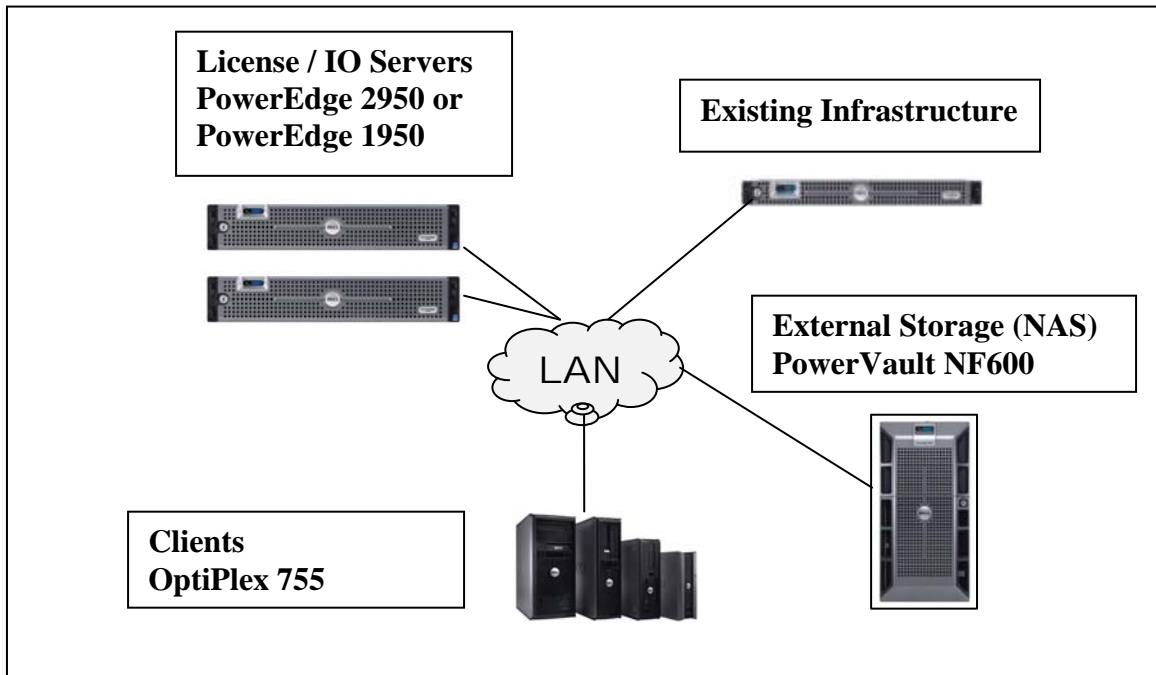
Microsoft Windows Vista Business 64
Microsoft Windows Vista Ultimate 32

Network:

Dell PowerConnect™ 6248
Dell PowerConnect 5324

High Availability Deployment – Basic

High Availability (HA) Basic deployments add server redundancy for increased fault tolerance without a large cost increase, and are for medium to large deployments.



License/IO Server: (at least 2)

Dell PowerEdge 2950
Dell PowerEdge 1950

Software:

Microsoft Windows Server 2003 R2 Standard or Enterprise Edition (32-bit)
Citrix Provisioning Server for Desktops 4.5

External Storage:

Dell PowerVault™ NF600

Software:

Microsoft Windows Storage Server 2003 R2 x64 Standard or Enterprise Edition

Client Platforms:

Dell OptiPlex 755

Dell OptiPlex 755 (diskless)

Streamed Operating Systems:

Microsoft Windows XP Professional

Microsoft Windows XP Professional x64 Edition

Microsoft Windows Vista Business 32

Microsoft Windows Vista Business 64

Microsoft Windows Vista Ultimate 32

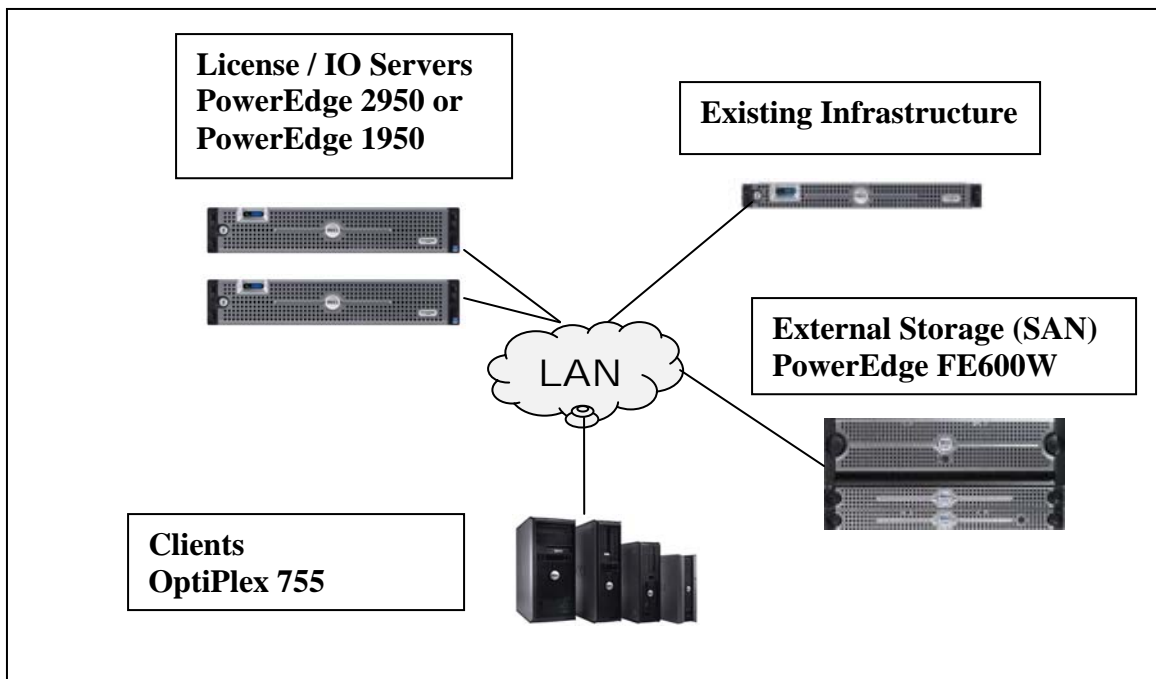
Network:

Dell PowerConnect 6248

Dell PowerConnect 5324

High Availability Deployment – SAN Cluster

HA SAN deployments are designed to have the highest redundancy and performance, and are for large deployments.



License/IO Server:

Dell PowerEdge 2950

Dell PowerEdge 1950

Software:

Microsoft Windows Server 2003 R2 Standard or Enterprise Edition (32-bit)

Citrix Provisioning Server for Desktops 4.5

External Storage:

Dell PowerEdge Cluster FE600W

Software:

Microsoft Windows Server 2003 R2 Enterprise Edition (32-bit)

Client Platforms:

Dell OptiPlex 755

Dell OptiPlex 755 (diskless)

Streamed Operating Systems:

Microsoft Windows XP Professional

Microsoft Windows XP Professional x64 Edition

Microsoft Windows Vista Business 32

Microsoft Windows Vista Business 64

Microsoft Windows Vista Ultimate 32

Network:

Dell PowerConnect 6248

Dell PowerConnect 5324