

# AUGUST 2005 The Dell EPP Exclusive Monthly Member Flyer

# NO INTEREST UNTIL 2007!

FOR WELL-QUALIFIED CUSTOMERS<sup>1</sup>



A feature of **Dell Preferred Account** for well-qualified customers<sup>1</sup>. Offer ends 8/31/05.



## Did you know...

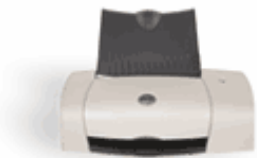
Dell EPP offers savings up to 12% on your purchases<sup>2</sup>.

EPP/FSS is the best deal on a new Dell home PC<sup>2</sup>. You receive increased savings and discounted 3-5 day shipping.

## FREE 3-5 Day Shipping

on select Dimension<sup>TM</sup> & Inspiron<sup>TM</sup> systems ordered online<sup>3</sup>.

\$19 handling charge applies.



FREE Dell 720 Printer

with select system purchase<sup>4</sup>. Or upgrade to a Photo All-In-One 922 for just \$35! Offer Valid 7/29-8/31/05



### Subscribe Now!

Subscribe to EPP E-mails for exclusive offers! Visit [dell.com/edu/subscribe](http://dell.com/edu/subscribe)

## Member Deals of the Month

### Dimension<sup>TM</sup> 3000 Desktop

**\$277** TOTAL SAVINGS

Essential Technology on a Budget

- Intel<sup>®</sup> Pentium<sup>®</sup> 4 Processor (2.80GHz, 1MB L2 Cache, 533MHz FSB)
- Microsoft<sup>®</sup> Windows<sup>®</sup> XP Home Edition
- 512MB Shared<sup>5</sup> DDR SDRAM
- 40GB<sup>6</sup> Hard Drive
- 17" E173FP Flat Panel Display
- 48X CD Burner
- 1-Yr At-Home Service<sup>7</sup>, 1-Yr Technical Support

~~\$966~~ Regular Price

- \$277 **Outrageous Deal Savings<sup>8</sup>** and 4% EPP Discount

**\$699** Your Discounted Price

➔ Go online or call for system details [dell.com/edu/flyer](http://dell.com/edu/flyer)

### Inspiron<sup>TM</sup> 6000 Notebook

**\$227** TOTAL SAVINGS

Affordable Widescreen

- Intel<sup>®</sup> Celeron<sup>®</sup> M Processor 350 (1.30 GHz, 1MB Cache, 400MHz FSB)
- Microsoft<sup>®</sup> Windows<sup>®</sup> XP Home Edition
- 15.4" Wide Screen XGA Display
- 256MB Shared<sup>5</sup> DDR2 SDRAM
- 40GB<sup>6</sup> Hard Drive
- 24X CD Burner/DVD Combo Drive
- **FREE Dell 720 Color Printer**
- 90-Day Mail-In Service, 90-Day Technical Support

~~\$899~~ Regular Price

- \$227 **Applicable Instant Savings or Mail-In Rebate<sup>9</sup>** and 4% EPP Discount

**\$672** Your Discounted Price

➔ Go online or call for system details [dell.com/edu/flyer](http://dell.com/edu/flyer)

GET MORE OUT OF MEMBERSHIP. GET MORE OUT OF NOW.



New York Department of Education  
Visit [dell.com/edu/flyer](http://dell.com/edu/flyer) or call 877-377-0238 Member ID: KS29290389

## Dare to Compare

Before you go to a retail store, shop Dell.

Dell checks Electronics and Accessories pricing so you don't have to!



**FREE 3-5 Day Shipping and Handling on all Electronics and Accessories orders over \$49.**

Before tax, shipping and handling<sup>10</sup>. \$19 handling charge applies for Dell™ TVs beginning 8/4/05.

Offer valid 7/28-8/31/05.

## Electronics & Accessories Items of the Month



### Dell 540 Photo Printer

- Lab-quality prints without the inconvenience of a trip to the photo lab
  - Clear Life Coating makes your prints durable, waterproof, long lasting and smudge proof under normal household conditions
  - Prints 4" x 6" in less than 60 seconds
- Dell Part# 540STD

**\$149**



### Sony DSC-T7 Cyber-shot Digital Camera

- 5.1 MP Super HAD™ CCD provides detailed photographic prints
  - 2.5" Clear Photo LCD monitor makes framing shots and reviewing pictures easy
  - Real Imaging Processor™ LSI improves picture-quality, clarity, camera response time and decreases shutter lag
- Dell Part #: A0464278

**\$499**



### Dell 5GB11 Pocket DJ™

- Stores up to 2500 songs<sup>12</sup>
  - Up to 10 hours<sup>13</sup> of battery life
  - Slim design and weighs only 4.4 Oz<sup>14</sup>
- Dell Part# PK51YR

**\$199**



### Logitech MX1000 Laser Cordless Mouse

- Rapid-charging base station makes sure the mouse is always charged
  - 4-level battery indicator lets you precisely monitor battery strength
  - Application switch quickly moves between open windows
- Dell Part# A0403865

**\$70**



### Lexmark X215 Multifunction Printer

- Combines the functionalities of a color printer, copier, scanner and fax
  - Fast inkjet printing up to 17 ppm (actual speed may vary with use)
  - Scanner captures the finest details with a maximum resolution of up to 4800x4800
- Dell Part# A0155552

**\$400**



### Lind 70-Watt Ruggedized Car Adapter for select Inspiron Notebooks

- Can be used to power notebook and charge the internal battery
  - Features a sealed, rugged ABS case for added durability
  - Offers undervoltage and overvoltage protection
- Dell Part# A0406003

**\$116**

GET MORE OUT OF MEMBERSHIP. GET MORE OUT OF NOW.



New York Department of Education  
Visit [dell.com/edu/flyer](http://dell.com/edu/flyer) or call 877-377-0238 Member ID: KS29290389

ALL ORDERS ARE SUBJECT TO APPROVAL AND ACCEPTANCE BY DELL. Offer subject to your employer's continuing participation in the Dell Member Program. Pricing, specifications, availability or other terms of offer may be withdrawn or changed without notice. Taxes, fees, and shipping and handling charges, other than systems and electronics and accessories free 3-5 day shipping offers, are extra, and vary. Free 3-5 day shipping offers available in Continental (except Alaska) U.S. only. Electronics and accessories purchases not included in systems free shipping offer. Valid for U.S. Dell Member Program new purchases only. Dell cannot be responsible for pricing or other errors, a reserves the right to cancel orders arising from such errors.

1. **PURCHASE PLAN: DELL PREFERRED ACCOUNT:** Offered by CIT Bank to qualified U.S. residents with approved credit. Creditworthiness determined by lender. Taxes, fees, and shipping and handling charges are extra and vary. Monthly payment based upon pre-rebate price. **\*NO INTEREST PROMOTIONAL FEATURE: FOR WELL QUALIFIED CUSTOMERS\***, as determined by lender. Available on purchases made from July 14, 2005 through August 31, 2005. Interest accrues during the promotional period and will be added to your account if balance not paid by January 1, 2007. Minimum monthly payments are required. For accounts not paid in full by January 1, 2007, account balance and new purchases will be subject to the Standard Rate (16.24% - 18.24% variable APR, as of July 15th, 2005, depending on creditworthiness).

2. EPP discounts taken on top of most generally advertised Dell Home Sales prices and promotions (some Home and Home Office special offers and coupons may be excluded). For comparative purposes only. Employee Purchase Program (Dell Marketing, LP) not associated with Dell Home Sales (D Catalog Sales, LP).

3. Valid 7/29/05 - 8/31/05. Free 3-5 day shipping on all Dimension systems \$499 or more (before tax, shipping, handling and mail-in rebate) and all Inspiron/Latitude systems \$799 or more (before tax, shipping, handling and mail-in rebate) ordered online. Continental U.S. orders only (except Alaska). Handling charge of \$17 applies on all systems.

4. Valid 7/29/05 - 8/31/05. One free printer per system purchase. Offer not available with \$499 Inspiron 1200 notebook offer, other printer offers, Outrageous Deals and Deals of the Week.

5. Up to 128MB of system memory may be allocated to support graphics, depending on system memory size and other factors.

6. For hard drives, GB means 1 billion bytes; actual capacity varies with preloaded material and operating environment and will be less.

7. At-home service provided via third-party contract with customer. Technician will be dispatched if necessary following phone-based troubleshooting. Availability varies. Other conditions apply.

8. Outrageous deal offers are not combinable with other rebates, percent off, or instant savings. Offer ends 8/31/05.

9. For Dell rebates, coupon must be postmarked within 30 calendar days of your system ship date and rebate checks are ordinarily processed within 8-10 weeks. Go to [dell.com/epprebates](http://dell.com/epprebates) or call 866-842-3616 for rebate coupons and more information.

10. Valid 7/28/05 - 8/31/05. Offer cannot be applied to systems and is not valid on electronics and accessories purchased with systems. Purchase limit of 5 same items per order. Continental U.S. orders only (except Alaska).

11. One GB = 1 billion bytes; actual capacity varies with preloaded material and operating environment and will be less.

12. Assumes audio format is 64kbps WMA encoding with average song length of 4 min.

13. Battery life is based on continuous play.

14. Weight is for unit only.

Dell, the Dell Logo, Dimension, Inspiron and DJ are trademarks of Dell Inc. Intel and Celeron are registered trademarks of Intel Corporation. Microsoft and Windows are registered trademarks of Microsoft Corporation. Other trademarks and trade names may be used in this document to refer to either the entities claiming the marks and names or their products. Dell disclaims proprietary interest in the marks and names of others. © 2005 Dell Inc. All rights reserved. Reproduction or translation of any part of this work beyond that permitted by U.S. copyright laws without the written permission of Dell Inc. is unlawful and strictly forbidden. Dell EPP Marketing, One Dell Way, Mailstop 8454, Round Rock, TX 78682.