

EMC ITEMPOINT FOR MICROSOFT EXCHANGE SERVER

Quick, item-level recovery from Exchange copies

ESSENTIALS

- Quickly recover and restore mailboxes, email, attachments, contacts, and tasks
- Simple to use; requires no modifications to your existing Exchange environment
- Powerful search capability enables fast recovery

Email is a mission-critical application that not only serves as the main conduit for communication, but also as a repository for important documents and files. Because of its ever growing scale, and the fact that email is considered “legal documentation,” a tool enabling the ability to recover lost or deleted email items is critical to the continuity of your business. The problem is clear: how many times have you received an urgent call from an executive or line of business trying to retrieve email or an attachment that was deleted long ago. You may have tapes and backups, but that method could take hours, if not days.

If you are already using EMC® Replication Manager to protect Microsoft® Exchange with snaps and clones, then you’ve taken the first step. What is required is a tool with high granularity that can quickly search for, find, and recover the individual email or files from the copy. When used with EMC Replication Manager, EMC ItemPoint allows you to quickly recover and restore mailboxes, email, and attachments, all with drag and drop simplicity.

RECOVER EMAIL ITEMS RAPIDLY AND EFFICIENTLY

ItemPoint delivers maximum business value for Exchange, storage, and VMware® administrators by providing an easy-to-use tool for granular email recovery. ItemPoint (requires EMC Replication Manager) is simple to install and requires no changes or reconfiguration to your existing Exchange environment.

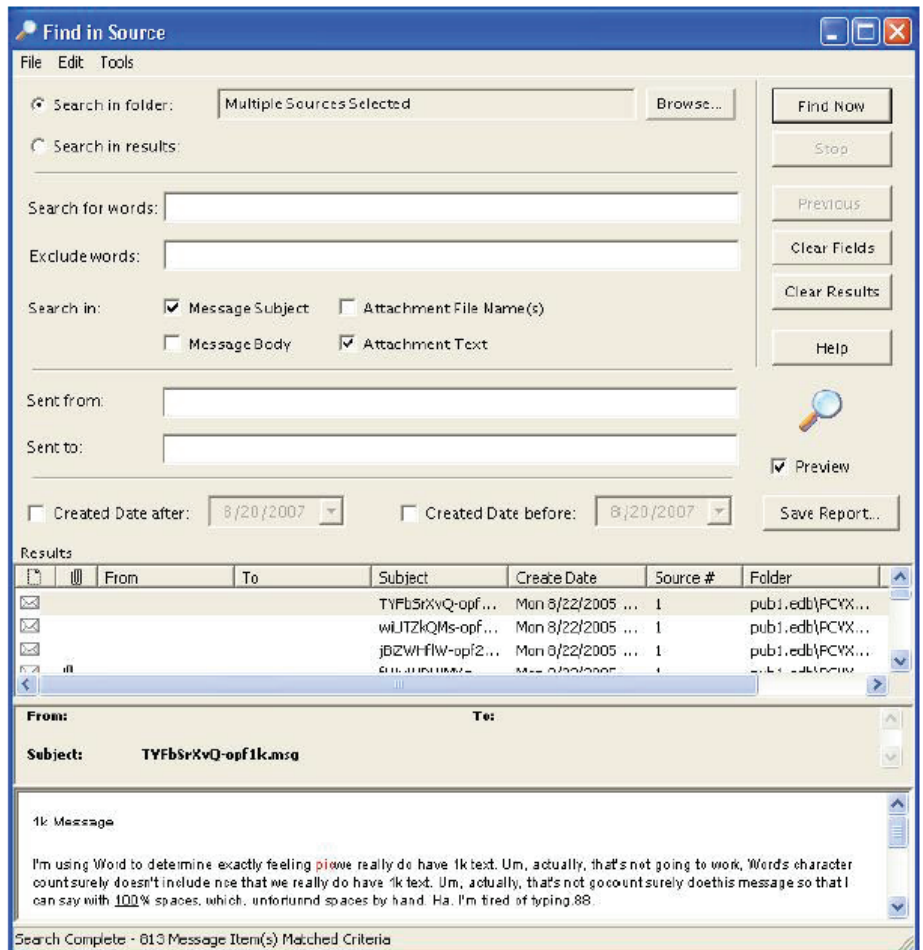
With ItemPoint, granular recovery is fast and painless thanks to its powerful search capability which allows you to locate the email or attachment quickly. Once the item is found, a simple drag and drop facilitates the recovery, requiring no “recovery server” as in traditional methods.

POWERFUL SEARCH CAPABILITY QUICKLY LOCATES EMAIL/ITEM

Finding that critical email or attachment is like looking for a needle in a haystack. ItemPoint solves this problem with an easy-to-use, but powerful, search interface which allows you to quickly locate the item you are looking for with great granularity.

With ItemPoint, you have the ability to search across multiple mailboxes or EDB files simultaneously, quickly, and accurately, pinpointing your target. The advanced search allows you to use specific criteria such as keywords, subjects, date ranges, to and from, etc. With ItemPoint’s advanced search, you can even search within attachments to quickly find and recover email or files.





Benefits of EMC ItemPoint include:

Increased business continuity

- Quick, easy “drag-and-drop” restore of single mailboxes means less time spent on searching and operational recovery

Improved efficiency

- Save time by recovering email in minutes instead of hours or days

No recovery server needed

- Save money, no recovery server or changes to your current environment is required

Accelerate Exchange migrations

- Copy mailboxes to an Exchange 2010 server without requiring both the old and new server to be online simultaneously

ITEMPOINT EXTRACTWIZARDS RECOVER DATA DIRECTLY FROM A BACKUP ARCHIVE

ItemPoint ExtractWizards facilitate the restoration of the Information Store from a backup tape or archive file to a local share, without the need of an Exchange Recovery Server. ItemPoint ExtractWizards are included for these popular backup programs:

- EMC NetWorker®
- Microsoft Windows NT Backup
- Symantec Backup Exec

INTEGRATED WITH EMC REPLICATION MANAGER FOR A COMPLETE EMAIL RECOVERY SOLUTION

EMC Replication Manager is a comprehensive solution for protecting Exchange with snaps/clones. Add ItemPoint to Replication Manager for an end-to-end email business continuity solution. ItemPoint gives you extensive options for email recovery including recovery from EMC RecoverPoint CDP (continuous data protection) bookmarks.

REQUIREMENTS

- EMC Replication Manager 5.4.1 (or later)
- Microsoft .NET Framework 3.5, SP1
- Intel Pentium compatible processor
- Windows Internet Explorer 8
- 1,024 MB RAM minimum
- 200 MB of free hard disk space for the installation
- Microsoft Office Outlook 2000 or later (the requirement is dependent on the Exchange Server version and interaction)

SUPPORTS

- Microsoft Exchange Server 2010 (including SP1)
- Microsoft Exchange Server 2007 SP3
- VMware Server 1.0x, 2.x
- VMware Workstation v6.0x, v7.0x for Windows
- Microsoft Virtual Server 2005 R2
- Microsoft Hyper-V™ Server 2008
- Microsoft Hyper-V Server 2008 R2
- Windows Server 2008 with Hyper-V
- Windows Server 2008 R2 with Hyper-V
- Microsoft Virtual PC 2007
- VMware ESX®/ESXi 3.5, 4.0, 4.1

CONTACT US

To learn more about how EMC products, services, and solutions can help solve your business and IT challenges, contact your local representative or authorized reseller—or visit us at www.EMC.com.

EMC², EMC, the EMC logo, and NetWorker are registered trademarks or trademarks of EMC Corporation in the United States and other countries. VMware and ESX are registered trademarks or trademarks of VMware, Inc. in the United States and/or other jurisdictions. All other trademarks used herein are the property of their respective owners. © 2012 EMC Corporation. All rights reserved. Published in the USA. 02/12 Data Sheet H9618