

The best choice for top-tier mobile performance



To determine which laptop would be best suited for business professionals, we compared the Dell Latitude 9440 against the HP EliteBook x360 1040 G10. We studied the aspects that matter most to modern workers, including mobility, performance and sustainability.



Latitude 9440 delivers **portability advantages** over EB x360 1040

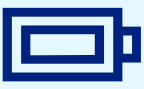
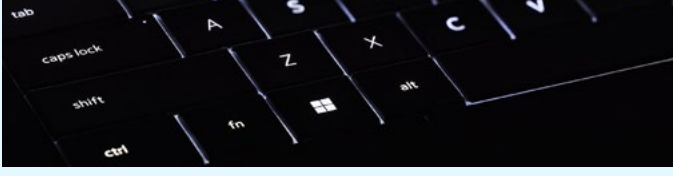
The Latitude 9440 is designed for on-the-go productivity and style without compromise, featuring a smaller overall size, larger touchpad and more advanced keyboard than the HP EliteBook x360 1040.

World's smallest 14-inch commercial PC¹

6% smaller footprint than HP EliteBook x360 1040

15% thinner than HP EliteBook x360 1040

World's first commercial PC with Zero-Lattice Keyboard² with battery-saving Mini-LED Backlit Technology that reduces the keyboard's power usage by up to 75% and increases battery life.³



Work longer between charges with a 60Whr battery vs. 51Whr in HP EliteBook x360 1040.



World's best screen-to-body ratio on a 14-inch commercial ultra-premium PC⁴

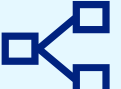


Better collaboration and connectivity experiences than EB x360 1040

Enjoy the world's most intelligent collaboration experience.⁵ The Latitude 9440 supports Dell Optimizer,⁶ the AI-based optimization software that learns and responds to the way people work, in addition to other premium features not found on the HP EliteBook x360 1040.



Touchpad
World's first haptic collaboration touchpad with customizable feedback,⁷ available with Dell Optimizer, allows users to quickly access Zoom conferencing controls (mic, camera, share screen and mute actions) when in a meeting.

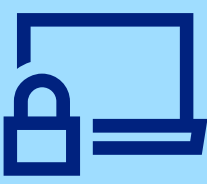


Connectivity
World's first simultaneous multi-network connection, via Dell Optimizer, prioritizes conferencing apps and delivers faster data and video downloads.⁸



Audio
More immersive sound with four—two top-firing and two bottom-firing—speakers vs. two speakers in EB X360 1040.

Voice Quality Monitoring with Dell Optimizer notifies users when voice quality is poor, so they can fix it fast.



Durability, security and privacy features not found on EB x360 1040

Dell has the industry's most secure commercial PCs,⁹ and the Latitude 9440 provides added peace of mind with durability and privacy features not found on the EliteBook x360 1040.

Security

Dell SafeID, SafeBIOS and optional SafeSupply Chain with Secured Component Verification.

Durability

Scratch-resistant screen (Corning Gorilla Glass 6 DX).

Privacy

Automated privacy with SafeShutter and Intelligent Privacy features from Dell Optimizer to help keep sensitive data private.



Committed to driving sustainable innovation

We design our products and packaging with sustainability in mind, using circular design and sustainable materials, while optimizing our PCs to be energy efficient – which helps reduce your IT carbon footprint.



World's first PC made with low-carbon emissions, **75% recycled aluminum** in the chassis.¹¹



Designed with **25% hydro-powered aluminum** and **75% recycled aluminum**, reducing the material's carbon footprint by 90%.¹²



Innovative use of **42% bio-based rubber** as well as ocean-bound and post-consumer recycled plastics.¹³



100% recycled or renewable packaging that is also 100% recyclable.¹⁴

To learn more, ask your account team to test out the Latitude 9440 today or visit dell.com/Latitude.

1. Based on Dell analysis, October 2022.
2. Based on Dell internal analysis of publicly available data, September 2022.
3. Based on Dell analysis, October 2022.
4. Based on Dell internal testing, October 2022. Applicable to Windows PCs only.
5. Based on Dell analysis, October 2022. Dell Optimizer not available in OptiPlex 3000 series, Latitude Chromebook Enterprise, and Linux-based devices. Feature availability and functionality may vary by model. For more details visit: <https://www.delltechnologies.com/asset/en-us/solutions/business-solutions/technical-support/dell-optimizer-features-availability-matrix.pdf>
6. Learn more about Dell Optimizer at dell.com/optimizer.
7. Based on Dell analysis, October 2022.
8. Simultaneous multi-network connection (or connection-based teaming) is a new connectivity feature under ExpressConnect. It simultaneously sends and receives data and video traffic using two wired or wireless connections. Based on Dell internal analysis.
9. Based on Dell internal analysis, September 2022.
10. Based on Dell analysis, October 2022. Applicable to Windows PCs only.
11. The Latitude 9440 chassis was designed with low-carbon aluminum, reducing the material's carbon footprint by 90%. Based on Dell internal analysis, October 2022.
12. Latitude 9440 2-in-1 utilizes 42% biobased rubber in the feet on the bottom of the device, 28% ocean-bound plastic in fan housing, 30% PCR in the speaker housing. Based on Dell internal analysis, February 2023.
13. 71.9% recycled content and 28.1% renewable materials in the form of FSC fibers. Percentages may vary slightly by region. Excludes optional items added to the order and included in the box. Paper packaging materials can be recycled via municipal recycling, where available. The system bag is made from recycled plastic and can be recycled along with other thin plastics. See local recycling guidelines.
14. Based on Dell analysis, October 2022.