

Innovation that changes the way professionals perform



To determine which laptop would be best suited for business professionals, we compared the Dell Latitude 9440 against the Lenovo X1 Yoga Gen 8. We studied the aspects that matter most to modern workers, including mobility, performance and sustainability.



Latitude 9440 delivers **better work experience** than X1 Yoga Gen 8

The meticulously crafted Latitude 9440 looks stylish and feels luxurious, with smart details like a large, feature-filled touchpad, to help on-the-go professionals immerse themselves immediately in their work.

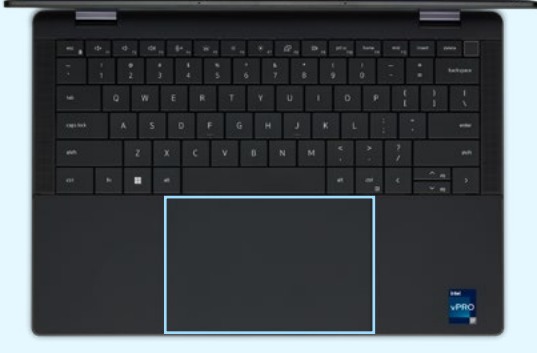
World's smallest 14-inch commercial PC¹

World's first commercial PC with Zero-Lattice Keyboard³ with battery-saving Mini-LED Backlit Technology that reduces the keyboard's power usage by up to 75% and increases battery life.⁴

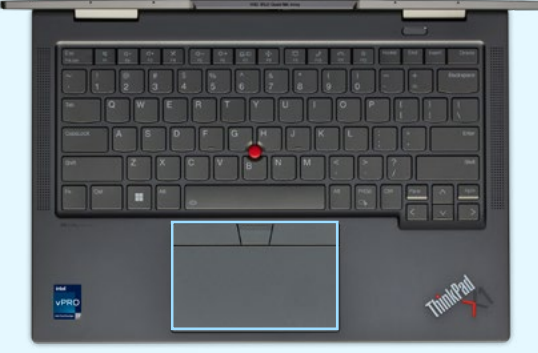


52% larger touchpad than X1 Yoga⁵

DELL LATITUDE 9440



LENOVO X1 YOGA GEN 8



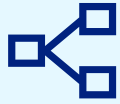
More flexible collaboration and connectivity than X1 Yoga Gen 8

Enjoy the world's most intelligent collaboration experience.⁶ The Latitude 9440 supports Dell Optimizer,⁷ the AI-based optimization software that learns and responds to the way people work, in addition to other premium features not found on the Lenovo X1 Yoga Gen 8.



Touchpad

World's first haptic collaboration touchpad with customizable feedback,⁸ available with Dell Optimizer, allows users to quickly access Zoom conferencing controls (mic, camera, share screen and mute actions) when in a meeting.



Connectivity

World's first simultaneous multi-network connection, via Dell Optimizer, prioritizes conferencing apps and delivers faster data and video downloads.⁹



Camera

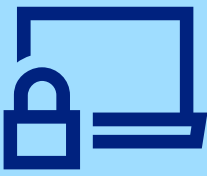
Temporal noise reduction (TNR) for sharper video, so professionals can look great on every video call.



Audio

AI-based neural noise canceling suppresses background noise on both the user's and speaker's side (Lenovo's noise-canceling feature works on only one side).

Voice Quality Monitoring with Dell Optimizer notifies users when voice quality is poor, so they can fix it fast.



Security, durability and privacy features not found on X1 Yoga Gen 8

Dell has the industry's most secure commercial PCs,¹⁰ and the Latitude 9440 provides added peace of mind with durability and privacy features not found on the X1 Yoga Gen 8.



Security

Dell SafeID, Dell SafeBIOS, and optional SafeSupply Chain with Secured Component Verification.

Durability

Scratch-resistant screen (Corning Gorilla Glass 6 DX).

Privacy

Automated privacy with SafeShutter and Intelligent Privacy features from Dell Optimizer to help keep sensitive data private.



Committed to driving sustainable innovation

We design our products and packaging with sustainability in mind, using circular design and sustainable materials, while optimizing our PCs to be energy efficient – which helps reduce your IT carbon footprint.



World's first PC made with low-carbon emissions, **75% recycled aluminum** in the chassis.¹¹



Designed with **25% hydro-powered aluminum** and **75% recycled aluminum,** reducing the material's carbon footprint by **90%.**¹²



Innovative use of **42% bio-based rubber** as well as ocean-bound and post-consumer recycled plastics.¹³



100% recycled or renewable packaging that is also 100% recyclable.¹⁴

To learn more, ask your account team to test out the Latitude 9440 today or visit dell.com/Latitude.

1. Based on Dell analysis, October 2022.
2. Based on Dell internal testing, October 2022; Applicable to Windows PCs only.
3. Based on Dell internal analysis of publicly available data, September 2022.
4. Based on Dell analysis, October 2022.
5. Dell Latitude 9440 touchpad measures 72x130mm, Lenovo X1 Yoga G8's touchpad measures 56x110mm.
6. Based on Dell analysis, October 2022. Dell Optimizer not available in OptiPlex 3000 series, Latitude Chromebook Enterprise, and Linux-based devices.
7. Feature availability and functionality may vary by model. For more details visit: <https://www.delltechnologies.com/asset/en-us/solutions/business-solutions/technical-support/dell-optimizer-features-availability-matrix.pdf>
8. Learn more about Dell Optimizer at dell.com/optimizer.
9. Based on Dell analysis, October 2022.
10. Simultaneous multi-network connection (or connection-based teaming) is a new connectivity feature under ExpressConnect. It simultaneously sends and receives data and video traffic using two wired or wireless connections. Based on Dell internal analysis.
11. Based on Dell internal analysis, September 2022. Not all features available with all PCs. Additional purchase required for some features.
12. Based on Dell internal analysis, October 2023.
13. Latitude 9440 2-in-1 utilizes 42% bio-based rubber in the feet on the bottom of the device, 28% ocean-bound plastic in fan housing, 30% PCR in the speaker housing. Based on Dell internal analysis, February 2023.
14. 71.9% recycled content and 28.1% renewable materials in the form of FSC fibers. Percentages may vary slightly by region. Excludes optional items added to the order and included in the box. Paper packaging materials can be recycled via municipal recycling, where available. The system bag is made from recycled plastic and can be recycled along with other thin plastics. See local recycling guidelines.