



Performance, security, superb solutions — in an A3 colour multifunction printer

Get maximum productivity with this versatile A3 colour multifunction printer that combines advanced document solutions with comprehensive security features. With built-in Optical Character Recognition (OCR) and workflow solutions, this workhorse printer helps boost office efficiency and productivity.

Get a low total cost of ownership, reliable performance and flexible scalability to meet demanding printing needs. With the C7765dn, you'll gain peace of mind with Dell's superb service support that includes on-site hardware installation and Limited Hardware Warranty¹ service.

Make demanding business printing needs easy with the C7765dn multifunction printer.



Dell™ Colour
Multifunction Printer -
C7765dn

For more information on our products, visit dell.co.uk/printers



The power to do more

1. For a copy of Limited Hardware Warranty, write Dell Products, Dell House, The Boulevard, Cain Road, Bracknell, Berkshire, RG12 1LF, UK or see dell.com/warranty. For warranty information for other countries, see website: dell.com/servicecontracts and then select the country.

Dell Colour Multifunction Printer | C7765dn



Superb performance

Maximise productivity with high performance features on a versatile device.

- Print, scan and copy up to A3 size from one versatile, colour multifunction device. (Print, scan, copy with analogue fax option is also available.)
- Print and copy at fast speeds of up to 35 pages per minute (ppm) in black/colour (A4)¹.
- Scan documents at outstanding speeds of up to 70 impressions per minute (ipm, simplex) with the inbuilt 110-sheet Duplex Automatic Document Feeder (DADF).
- Easily meet high volume printing demands with a high duty cycle² of up to 153,000 pages per month.

Improved workgroup manageability

Manage tasks efficiently with built-in advanced document and workflow solutions.

- Scan and convert documents into editable, searchable PDFs directly from the printer with built-in Optical Character Recognition (OCR), making it easy to search for, retrieve and edit the information.
- High compression scanning allows users to send and receive high resolution files that contain text and graphics without consuming excessive storage space, helping to free up network bandwidth.
- Streamline workflows with one-touch Job Flow Sheets. Use the Job Flow Editor to group complicated and repetitive tasks into a simple job flow — ready to activate with a touch of a button.
- Easily scan and route documents to multiple destinations – printer, emails, network folders, or any USB memory device.
- Designed to scale with businesses, the C7765dn comes with a highly customisable open solution platform, capable of supporting third party and customised imaging solutions³.

Enterprise-level security for strong protection

Protect the device, data and sensitive information from unauthorised use with comprehensive security features.

- Prevent unauthorised printer usage through network user walk-up authentication with LDAP and Kerberos.
- Safeguard confidential scan and fax data with Digital Signature and 256-bit Advanced Encryption Standard (AES) encryption while sharing across a network or across devices.
- Protect print, fax or email jobs with the printer's hard drive encryption feature. Multi-pass secure erase further enhances hard-drive security, reducing the risk of confidential data being compromised when the printer's hard disk is accessed illegally.

Easy to use and customise

Simplify tasks and save time with intuitive and customisable features. Extensive input and finishing options allow various printer configurations to meet varying business printing needs.

- Easily navigate printer menus with the large, intuitive 8.5-inch colour touch screen. Personalise control panel functions per user with the Shortcut Menu⁴.
- Quickly access and print frequently used forms stored on the printer using the My Forms feature⁴.
- Get hassle-free, fast power up with the printer's wake-up motion sensor. Comprising of pyroelectric and reflection motion sensors, the printer is automatically powered up from sleep mode and ready to use when someone is in close proximity.
- Expand the capabilities of the printer with input options, to meet high volume printing needs for a variety of print media. Additional finishing options allow easy creation of in-house marketing collateral from the comfort of your office.
- Print documents, web content, photos and more, directly from a variety of mobile devices, such as smartphones and tablets, with:
 - Dell Mobile Print app (for Android™ mobile devices)⁵
 - Mobile Print App for Dell (for iOS mobile devices)⁵

1. Measured in accordance with ISO IEC 27434 methodology. Actual print speeds will vary with use.

2. Duty cycle is defined as the maximum number of imaged outputs a device could deliver in a month. This metric provides a comparison of robustness in relation to other Dell printers and multifunction printers.

3. Requires Software Development Kit (SDK), available from Quarter 1, 2014.

4. From November 2013, these solutions will also be available for download as a firmware update from Dell.com/support.

5. Mobile printing support is available from November 2013. Requires the local office administrator to provide access to download the relevant app for corporate use. Configuration of the printer and the mobile device must be on the same authorised wireless network.

Get outstanding value

Gain long term savings with a low cost per page, long lasting maintenance parts and energy saving features.

- Save on printing cost with the optional high yield toner cartridges that can print up to 26,000 pages¹ (black) and 15,000 pages¹ (colour).
- Reduce downtime and save on maintenance costs with longer life² maintenance parts, inclusive of 360,000 pages fuser, 164,000 pages mono imaging drum and 143,000 pages colour imaging drum.
- Reduce power consumption with Smart Energy Management which powers only the modules required for a specific task.
- Save energy costs with a low Typical Energy Consumption (TEC)³ of 1.8 kWh/week at 230 VAC.
- The low melt emulsion aggregate EA-Eco toner used in the C7765dn melts at a temperature lower than conventional toner to provide energy savings as well as brilliant glossy prints on plain paper.



Convert scanned document into searchable digital files with in-device **Optical Character Recognition (OCR)**.



Scan two-sided documents easily with the Duplex Automatic Document Feeder.



Save time and power with **automatic wake-up sensor** that will detect nearby presence and power up the device instantly.



Supports **high volume printing** with a high monthly duty cycle⁵ of up to 153,000 pages.



Increase efficiency with fast print and copy speeds of up to 35 ppm⁶.



Fast data transmission with Gigabit Ethernet 10/100/1000.



Enjoy **long-term cost savings** with high-yield toner capacity of 26,000¹ pages (black) and 15,000¹ pages (colour).



Ease of operation with the intuitive 8.5-inch touch screen control panel.



Print and easily create marketing collateral with additional **finishing options**.

1. Toner yield based on testing in accordance with ISO/IEC 19798. Yields vary with usage and environmental conditions.

2. Compared against comparable tabloid (A3) color laser multifunction printers (<\$10,000) as of 1st July 2013.

3. For the Typical Energy Consumption value calculation details please visit: www.energystar.gov/ia/products/fap/IE_TEC_Test_Procedure.pdf

4. For copy of Limited Hardware Warranty, write Dell Products, Dell House, The Boulevard, Cain Road, Bracknell, Berkshire, RG12 1LF, UK or see www.dell.com/warranty. For warranty information for other countries, see website: www.dell.com/servicecontracts and then select the country. Service may be provided by third party. Technician will be dispatched if necessary following phone-based troubleshooting. Subject to parts availability, geographical restrictions and terms of service contract.

5. Service timing dependent upon time of day call placed to Dell. Defective unit must be returned.

6. Duty cycle is defined as the maximum number of imaged outputs a device could deliver in a month. This metric provides a comparison of robustness in relation to other Dell printers and multifunction printers.

6. Measured in accordance with ISO IEC 27434 methodology. Actual print speeds will vary with use.

Get tasks done efficiently and effortlessly with powerful embedded document and workflow solutions.



Shortcut Menu¹

Create customised shortcuts, specific to users with personalised logins on the touch screen control panel.

Optical Character Recognition (OCR)

In-device OCR enables the conversion of hardcopies to searchable and editable PDF files, making the content easy to search for, retrieve and edit.

Job Flow Editor Utility

Simplify workflows by creating customised one-touch workflow solutions. With this utility, users are able to group complex and repeated tasks into a single preset workflow — ready for activation with a touch of a button.

My Forms¹

Create and store frequently used forms on the printer. These forms can be quickly accessed and printed via the My Forms icon on the touch screen control panel.

Access to Google Drive¹

Scan to and print from Google Drive™, directly from your printer².

Eco Copy¹

The Eco Copy function reduces paper consumption and toner used during copying by enabling users to easily select copy options such as multi-page (N-up) and duplex (two-sided).

USB Direct Print/Scan

Front USB port provides easy access to content from USB flash drives on the printer control panel, for convenient previewing before printing or storing scanned files.

Be in full control of the printer fleet with Dell OpenManage™ Printer Manager (OMPM)

Quickly and easily monitor, manage and report the status of network printers from the Dell™ OMPM centralised dashboard.

Use Dell OMPM to:

- Remotely locate printers that have errors and identify problems, enabling IT managers to take the appropriate actions to remedy the situation.
- Obtain alerts via email notifications, when a printer needs attention.
- Remotely monitor toner and paper-in-tray status (applicable to most printer models).
- Group multiple printers with similar setups together for easy upgrades of all the printers in the group.

Simplify workload with Dell Open Printer Driver (OPD)

- Eliminate the clutter on PCs by replacing multiple print drivers with one versatile solution, the Dell Open Printer Driver (OPD). It can help to reduce the huge workload of driver deployment and setting changes.



1. From November 2013, these solutions will also be available for download as a firmware update from Dell.com/support.

2. Requires Google Drive™ account.

Dell Colour Multifunction Printer | C7765dn



1. Duplex Automatic Document Feeder (DADF)
2. 297 mm x 432 mm flatbed scanner
3. 400-sheet output
4. 8.5-inch colour touch screen (resistive)
5. 560-sheet input tray x 4
6. Built-in Reflection sensor for automatic wake-up/sleep function
7. 100-sheet multipurpose tray
8. Built-in Pyroelectric sensor for automatic wake-up/sleep function

Consumables

Ship-with toner cartridge capacity¹

15,000 pages (black)
15,000 pages (colour - CMY)

Standard capacity toner cartridge¹

15,000 pages (black)
15,000 pages (colour - CMY)

High capacity toner cartridge¹

26,000 pages (black)

Imaging Drum:

164,000 page yield (black)
143,000 page yield (colour - CMY)

Toner Waste Container:

45,000 page yield

Fuser:

360,000 page yield

Warranty and service options

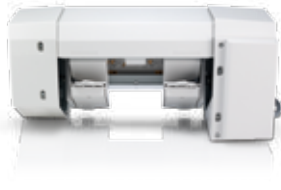
Standard service

1 Year Limited Hardware Warranty².

C7765dn accessories (sold separately)



Base Finisher



Booklet Maker Unit for Base Finisher



2,300-sheet High Capacity Feeder



Wing Table

Base Finisher	Sort, stack and staple your printed documents with the optional Base Finisher.
Booklet Maker Unit for Base Finisher	Provides additional saddle-stitching/creasing function (operates with Base Finisher).
2/4 Hole Puncher	Provides additional 2 or 4 hole punching function (operates with Base Finisher).
2,300-sheet High Capacity Feeder	Increase the paper input capacity of C7765dn by 2,300 sheets.
Fax Kit	Enables connection to standard fax services.
Wing Table	Installed on the left side of the C7765dn, to provide additional worktop space or to place optional card readers.

¹ Toner yield based on testing in accordance with ISO/IEC 19798. Yields vary with usage and environmental conditions.

² For a copy of Limited Hardware Warranty, write Dell Products, Dell House, The Boulevard, Cain Road, Bracknell, Berkshire, RG12 1LF, UK or see dell.com/warranty. For warranty information for other countries, see website: dell.com/servicecontracts and then select the country.

Product Specifications

Printer specifications	Print speed (Mono/Colour)	Up to 35 ppm ¹ (A4, Simplex/Duplex)
	First page out time from Ready state	Less than 9.0 seconds (Mono); less than 10.5 seconds (Colour)
	Print technology	LED
	Print resolution	1200 x 2400 dpi
	Operation panel	8.5" Colour Touch Screen (Resistive), 800 x 480 pixels, Viewing Area: 184.8 mm x 110.8 mm, Backlight: White backlight, Buttons: 27
	Print language	PCL 6, PCL 5C, Adobe® PostScript 3™, XPS, PDF v1.7
	Fonts	HP PCL® 6 Emulation: 80 scalable fonts PostScript® Level 3: 136 Scalable fonts
	Processor speed	1067 MHz
	Memory	2 GB ² memory
	Hard disk	160 GB ²
	Maximum duty cycle	Up to 153,000 pages per month ³
	Recommended monthly print volume	8,000 to 30,000 pages per month
	Mobile printing⁴	Dell Mobile Print (Android™ OS), Mobile Print App for Dell by Thinstream™ (iOS).
Printer management	Dell Printer Configuration Web Tool (EWS), Dell ColorTrack	
Security features	SNMP V3, AES256 Encryption, Authentication with LDAP/Kerberos/SMB, Secured PDF, Secure Print, Digital Certification verification	
In-device solutions	Optical Character Recognition (OCR), Job Flow Editor Utility, My Forms ⁵ , Google Drive Access ⁵ , USB Direct Print, Eco Copy ⁵ , Shortcut Menu ⁵	
Scan specifications	Scan type	CCD flatbed scanner with DADF
	Scan resolution	Optical: 600 x 600 dpi, Software Enhanced: 600 x 600 dpi (max)
	Scan features	Walk-up Scan (Scan to Email, Scan to FTP, Scan to SMB, Scan to USB, Scan to Internal Storage, Scan to URL, Scan to WSD); Walk-up Scan to Address Book (Email addresses - 2,000 entries, Fax addresses - 2,000 entries)
	Scanning speed	Up to 70 ipm (Simplex) for both mono and colour at 200 dpi
	Scan to media (file format)	TIFF (Single/Multi), JPEG, PDF (V1.6), XPS
	Scan size (max)	Scan Platen and ADF: 297 mm x 432 mm
Copy specifications	Copy speed (600 x 600 dpi, Colour/Mono)	Up to 35 cpm (1 to N, N to N)
	First copy out time	Mono Priority Mode: 8.5 seconds (colour), 5.2 seconds (mono) Colour Priority Mode: 7.2 seconds (colour), 6.4 seconds (mono)
	Copy resolution	600 x 600 dpi
	Maximum copies	999
	Copy settings	Booklet Creation, Covers, N-up, Annotation, Duplex, ID Copy, Job Cancel, Sharpness, Colour Balance, Background Removal, Colour Saturation
	Enlarge	25 % to 400 % (Platen), 25 % to 400 % (ADF)
Fax specifications⁶	Modem speed/ Fax transmission speed	Up to 33.6 kbps
	Speed dial	2,000 entries
	Fax features	Transmit: Broadcast, Delay/Schedule, Forward, Secure, Polling Receive: Secure, Polling, Receive and forward to email
Duplex Automatic Document Feeder (DADF)	DADF Input capacity	75 sheets (81 - 128 gsm), 110 sheets (38 - 80 gsm)
	Media type	Plain paper, Lightweight paper, Heavyweight paper
	Media size	A4 Short Edge Feed (SEF), B5 SEF, A5 SEF, US Letter SEF, Folio (8.5" x 13") SEF (Europe and Asia only), Legal (8.5" x 13") (US and Canada only) Custom paper size (Min): 125 mm x 85 mm Custom paper size (Max): 297 mm x 431.8 mm
Connectivity	Standard interfaces	High speed USB 2.0 device port, Gigabit Ethernet port, 1 USB host port (front), 2 USB port (rear) via optional USB hub kit
Operating Systems	Windows	Windows® 8 (32/64 bit), Windows 7 (32/64 bit), Windows Vista (32/64 bit), Windows Server 2008 R1 & R2, Windows XP (32/64 bit), Windows 2003 Server (32/64 bit)
	Macintosh	Macintosh OS 10.5 to 10.8
	Others	SUSE® Linux Enterprise Desktop 10, 11; Red Hat Linux Enterprise Desktop 5, 6; Nowell® Netware Support; SAP R/3 Release 4.6B onwards; Citrix® Presentation Server™ 4.5, Citrix XenApp 5.0 to 6.5

Standard media types, sizes and paper weights	Standard trays	
	Media types and weights supported	Plain paper (60 gsm - 105 gsm), Recycled paper (60 gsm - 105 gsm), Preprinted (60 gsm - 105 gsm), Heavier paper (106 gsm - 256 gsm), Coated paper (106 gsm - 256 gsm), Label paper (106 gsm - 169 gsm), Transparency
	Media sizes	A5 Short Edge Feed (SEF), A4 SEF/Long Edge Feed (LEF), Tabloid (17" x 11") SEF, A3 SEF, B5 SEF/LEF, B4 SEF, Statement (5.5" x 8.5") SEF, Executive (7.25" x 10.5") SEF, US Letter (8.5" x 11") SEF/LEF, Folio (8.5" x 13") SEF, US Legal (8.5" x 14") SEF, Ledger (11" x 17") SEF, SRA3 (320 mm x 450 mm) (except tray 1) Custom size (Min): 139.7 mm x 182 mm Custom size (Max): 297 mm x 431.8 mm
	Multipurpose tray	
	Media types and weights supported	Plain paper (60 gsm - 105 gsm), Recycled paper (60 gsm - 105 gsm), Preprinted (60 gsm - 105 gsm), Heavier paper (106 gsm - 256 gsm), Coated paper (106 gsm - 256 gsm), Label paper (106 gsm - 169 gsm), Envelope, Hagaki cards, Transparency
	Media sizes	A5 SEF, A4 SEF/LEF, A3 SEF, B6 SEF/LEF, B5 SEF/LEF, B4 SEF, Statement (5.5" x 8.5") SEF, US Letter (8.5" x 11") SEF/LEF, Folio (8.5" x 13") SEF, Legal (8.5" x 14") SEF, Ledger (11" x 17") SEF, Post Card, Envelope Com-10 (SEF), Envelope Monarch (SEF), Envelope DL (LEF/SEF), SRA3 (320 x 450mm) SEF (Only through Tray 2, 3, 4, 5) Custom size (Min): 88.9 mm x 98.4 mm Custom size (Max): 320 mm x 482.6 mm
	Optional High Capacity Feeder	A4 SEF/LEF, Letter (8.5" x 11") SEF/LEF, Executive (7.25" x 10.5") LEF
Printable area	305.0 mm x 476.6 mm	
Paper handling	Standard input sources	4 x 560-sheet standard tray; 100-sheet multipurpose tray
	Additional input capacity	2,300-sheet High Capacity Feeder tray
	Maximum input capacity	4,640 sheets
	Duplexer	Automatic two-sided printing (Standard)
	Output capacity	400 sheets
Physical specifications	Dimensions (W x D x H)	Printer: 640 mm x 699 mm x 1128 mm Shipping: 752 mm x 772 mm x 1179 mm
	Weight	Printer: 132.0 kg with consumables; Shipping: 158.0 kg
	Operating environment	Temperature: 10 to 32 °C, Humidity: 15 to 85% RH, non-condensing, Altitude: ≤ 2,500 m
	Storage	Temperature: 0 to 35 °C, Humidity: 15 to 80% RH, non-condensing, Altitude: ≤ 2,500 m
	Acoustics (Pressure emission bystander/Power emission)	Base configuration (Printing): 49.1dB ⁷ /6.61B ⁷
Power specifications	Voltage	
	220 VAC model	220-10%, 240+10% VAC, 50 Hz ± 3 Hz/60 Hz ± 3 Hz
	Power consumption	Ready mode: 60W or less Power saver mode: 2.5W at 230 VAC
	Typical energy consumption	1.8 kWh/week at 220 VAC ⁸
Environmental compliance	Class A, ErP Lot 4, RoHS-compliant ⁹ , ENERGY STAR [®] qualified ¹⁰ , Blue Angel (Germany), WEEE, REACH, GS Mark	
Supported languages	English, French and German	
Product certifications	Safety certifications	NEMKO (Nordic); CE Mark (EU); CSA certified for US and Canada; Germany GS Certified and other Safety Certifications required by individual countries
	Other certifications	CE mark (EU countries); EN 55022 (Class A); EN55024; EN61000-3-2 (Class A); EN 61000-3-3; R&TTE Directive (EU); FCC CFR Title 47, Part 15 Class B (USA); FCC Part 68 TCB (USA) CAN ICES-3(B) / NMB-3(B)
Contents in box	Dell Colour Multifunction Printer - C7765dn, Ship-With Black Cartridge and Colour (Cyan, Magenta, Yellow) Cartridges (15,000-page yield ¹¹), Power cord, Quick Setup Sheet, Software and Instructions CD, Product Information Guide	

1. Measured in accordance with ISO IEC 27434 methodology. Actual print speeds will vary with use.

2. 1 MB means 1 million bytes, 1 GB means 1,000 megabytes or 1,000,000,000 bytes; total accessible capacity varies depending on operating environment.

3. Duty cycle is defined as the maximum number of imaged outputs a device could deliver in a month. This metric provides a comparison of robustness in relation to other Dell printers and multifunction printers.

4. Mobile printing support is available from November 2013. Requires the local administrator to provide access to download the relevant app for corporate use. Configuration of the printer and the mobile device must be on the same authorised wireless network.

5. From November 2013, these solutions will also be available for download as a firmware update from Dell.com/support.

6. Applicable to SKU sold with fax only.

7. Tested in accordance with ISO 7779 and reported in accordance with ISO 9296. Acoustics - Declared noise emission values of computer and business equipment.

8. For the Typical Energy Consumption value calculation details please visit: www.energystar.gov/ia/products/fap/IE_TEC_Test_Procedure.pdf

9. Meets the requirements of the EU Directive on the Restriction of the use of certain Hazardous Substances dated January 27, 2003.

10. For details on energy efficiency of ENERGY STAR[®] qualified products, refer to: www.energystar.gov

11. Toner yield based on testing in accordance with ISO/IEC 19798. Yields vary with usage and environmental conditions.

Configuration Options



Configuration 1 (Standard)

Standard tray	560-sheet x 4
Multipurpose tray	100-sheet
Total	2,340-sheet



Configuration 2

Standard Tray	560-sheet x 4
Multi-purpose Tray	100-sheet
Total	2,340-sheet

With optional Base Finisher



Configuration 3

Standard tray	560-sheet x 4
Multipurpose tray	100-sheet
Total	2,340-sheet

With optional Base Finisher & Booklet Maker



Configuration 4

Standard Tray	560-sheet x 4
Multi-purpose Tray	100-sheet
High Capacity Feeder	2,300-sheet
Total	4,640-sheet



Configuration 5

Standard Tray	560-sheet x 4
Multi-purpose Tray	100-sheet
High Capacity Feeder	2,300-sheet
Total	4,640-sheet

With optional Base Finisher



Configuration 6

Standard Tray	560-sheet x 4
Multi-purpose Tray	100-sheet
High Capacity Feeder	2,300-sheet
Total	4,640-sheet

With optional Base Finisher & Booklet Maker



Optional 2/4 hole puncher
*Applicable for configurations 2, 3, 5 and 6