

## Dell Laser Printer 1700 & 1700n



### DELL MAKES IT EASY TO BUY, USE AND OWN PRINTERS

#### Easy to Buy

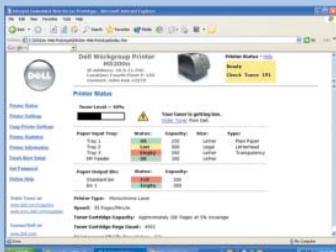
- Dell Direct Advantage: Order online or through our professional sales team
- Fast, sharp printing
- Low total cost to purchase, operate and maintain
- Convenient recycling options included with hardware and toner at no additional cost

#### Easy to Use

- Dell Printer Web Tool
- Low maintenance with high-yield toner and optional paper drawer
- Convenient toner installation using drop-in cartridge design
- 24x7 toll-free technical phone support

#### Easy to Own

- Convenient ink/toner ordering and delivery with Dell Toner Management System™
- Dell award-winning service & support staff
- Wide range of service offerings
- One-stop shopping and support with Dell printers, systems and networking



#### Dell Printer Web Tool for 1700n

- Designed for easy installation, configuration and management of Dell network printers and consumables, this web-based tool can be set up to provide automatic e-mail notifications of printer, consumables and paper-handling alerts.
- Can be accessed using a standard web browser
  - Doesn't require additional software installation
  - Resides on printer hardware



The Dell Laser Printer 1700 offers fast, affordable printing in a compact design. Choose the 1700 for direct attach printing from your computer or select the 1700n to share over your office network. Fast, up to 25 page per minute print speed<sup>1</sup>, up to 15,000 page monthly duty cycle, 800-sheet maximum paper capacity, and the large optional 6,000 page high yield toner cartridge\* make it ideal for a busy office environment.

From purchase to supplies to service, the 1700 and 1700n are an exceptional value. Save money with low hardware pricing and low toner cost per page. Easily manage and order supplies with the Dell Toner Management System™. Both the 1700 and 1700n include 1-year Next Business Day Advanced Exchange Service<sup>2</sup> and 24x7 toll free technical phone support.

### The Dell Laser Printer 1700 & 1700n deliver:

#### Outstanding Performance

- Fast printing - up to 25 pages per minute<sup>1</sup>
- Sharp print quality - 1200 x 1200 dpi
- High-yield toner cartridge options - approximately 6,000 pages at 5% page coverage
- Durable, up to 15,000 page monthly duty cycle
- 1700n model adds networking, PostScript and an additional 16MB of memory

#### Easy Management

- Dell Toner Management System™ tells you when toner is low
- Standard and high-yield toner cartridges\*\*

#### Quality Dell Service & Support

- 24x7 toll-free technical phone support
- One-year Next-Business-Day Advanced Exchange Service<sup>2</sup>
- Two-, three- and four-year Extended Service options
- Options include Next Business Day Onsite Repair Service<sup>4</sup>, Printer Gold Technical Phone Support, Installation and Asset Tagging

#### Easy to Use

- Includes setup placemat for quick and easy installation
- Easy toner installation using drop-in cartridge design

#### Convenience - Easy to Get Toner

- Lifetime limited toner cartridge warranty<sup>3</sup>
- Order toner at [www.dell.com/supplies](http://www.dell.com/supplies)
- Direct link to website from Low Toner alert
- 3-5 day shipping included at no additional charge<sup>5</sup>, overnight shipping available
- Environmentally friendly: Dell pays postage to return toner cartridges to Dell for recycling

# Dell Laser Printer 1700 & 1700n

## DELL TONER MANAGEMENT SYSTEM™ IS AS EASY AS 1-2-3

1. Intelligent software alerts you when toner levels are low. Select the recipient of the alert using the Dell Printer Web Tool.

2. Click "Order Toner Online" and connect directly to [www.dell.com/supplies](http://www.dell.com/supplies) and [www.premier.dell.com](http://www.premier.dell.com) or call 1-877-Ink-2-You.

3. Select printer model, enter your payment information and your toner is ordered. Save time and money with no-charge three- to five-day ground shipping.<sup>5</sup>

## SERVICE AND SUPPORT

**One year of Next-Business-Day Advanced Exchange Service<sup>2</sup> provided by Dell's award-winning service and support staff**

- 24x7 toll-free technical phone support

- Next Business Day Onsite Service<sup>4</sup>, Installation, Asset Tags and Printer Gold Technical Phone Support options are also available

- You can use the Dell Online Support site for the most up-to-date drivers and technical information about your printer. Visit [www.support.dell.com](http://www.support.dell.com) for details

## RECYCLING MADE SIMPLE



Recycling printers and toner with Dell is easy, safe and no charge to the customer. Visit [www.dell.com/recycling](http://www.dell.com/recycling) for details.

- Each Dell printer includes instructions for returning an old printer for recycling

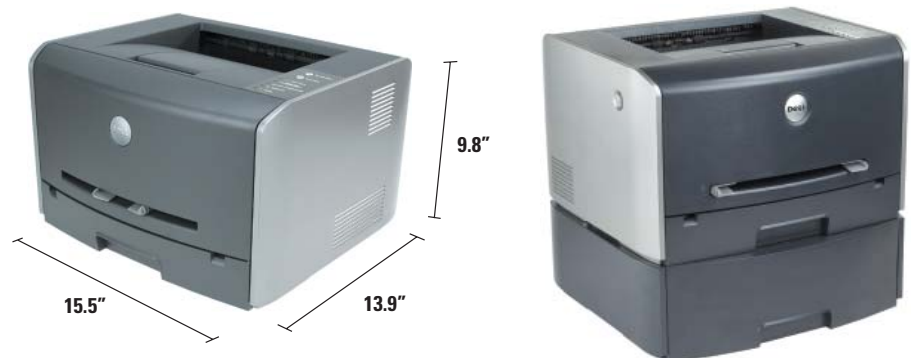
- Dell toner cartridges include a prepaid label to return the used cartridge for recycling

- Dell pays shipping charges for printer and toner recycling

## FEATURES DESCRIPTION

<b>Printer Type:</b>	Monochrome laser
<b>Printer Speed<sup>1</sup>:</b>	Up to 25 pages per minute
<b>Processor:</b>	200 MHz
<b>Memory:</b>	16MB standard / 144MB max for 1700 32MB standard / 160MB max for 1700n
<b>Monthly Duty Cycle:</b>	Up to 15,000 pages per month
<b>Max. Resolution:</b>	1200x1200 dpi
<b>Media Types:</b>	Plain paper, envelopes, card stock, transparencies
<b>Paper Weight:</b>	16 - 24 lb drawer, 16 - 43 lb manual feed
<b>Media Sizes:</b>	Letter, legal, executive, folio, B5, A4, A5, Statement, Universal
<b>Standard Input Tray:</b>	Standard 250-sheet covered paper input drawer
<b>Optional Input:</b>	Optional 550-sheet paper drawer
<b>Print Cartridges:</b>	3,000 page yield black (included)*; 6,000 page yield black*; 30,000 page print drum
<b>Print Languages:</b>	PCL5e, PCL6, add PS3 for 1700n
<b>Fonts Support:</b>	1700 - 17 Scalable PCL fonts, 12 Scalable PS fonts, 2 Bitmap 1700n - 89 Scalable PCL fonts, 91 Scalable PS fonts, 2 Bitmap
<b>Connectivity:</b>	USB & Parallel, add 10/100 Ethernet for 1700n
<b>Minimum OS:</b>	Windows® XP, 2000, 98SE, NT4.0, RedHat Linux 7.2, 7.3, 8.0, SuSE Linux 7.2, 7.3, 8.0
<b>Dimensions:</b>	15.5" x 13.9" x 9.8" (WxDxH)
<b>Weight:</b>	27 lb
<b>Printer Management:</b>	Dell Toner Management System™ intelligent toner monitoring proactively notifies you before you run out of toner, add Dell Printer Web Tool for 1700n
<b>Power:</b>	100 to 127 volts (V) at 50 to 60 hertz (Hz), 600W power consumption operating (20W sleep), Energy Star Compliant, Power cord included
<b>Standard Service:</b>	1 year, Next Business Day Advanced Exchange Service <sup>2</sup> standard; 1 year 24x7 toll-free tech support
<b>Humidity Range Operating:</b>	8 to 80% Relative Humidity
<b>Max/Min Operating Temperature:</b>	16 to 32°C (60 to 90°F)
<b>Sound Emission:</b>	52dBA printing, 30dBA idle
<b>Certifications:</b>	UL 60950, U.S. FDA, CDRH, Energy Star Compliant, FCC Class B CE mark Class B, U.S. FDA, CDRH

\*Monochrome print cartridge yield based on 5% page coverage; color print cartridge yield based on 20% page coverage. Yields vary with usage and environmental conditions.



Exceptional Performance. Easy as **DELL™**

Dell cannot be responsible for pricing or other errors, and reserves the right to cancel orders arising from such errors. 1 Actual print speed will vary with use. 2 Replacement part or unit will be dispatched if necessary following phone-based troubleshooting in advance of receipt of returned defective unit. Subject to parts availability, geographical restrictions and terms of service contract. Service timing dependent upon time of day call placed to Dell. Defective unit must be returned. Replacements may be refurbished. U.S. only. 3 For a copy of our guarantees or limited warranties, please write Dell USA L.P., Attn: Warranties, One Dell Way, Round Rock, TX 78682. For more information, visit [http://www.dell.com/us/en/gen/misc/policy\\_010\\_policy.htm](http://www.dell.com/us/en/gen/misc/policy_010_policy.htm). 4 Service may be provided by third-party. Technician will be dispatched if necessary following phone-based troubleshooting. Subject to parts availability, geographical restrictions and terms of service contract. Service timing dependent upon time of day call placed to Dell. U.S. only. 5 Valid for Continental (except Alaska) U.S. only. Dell and the Dell logo are registered trademarks of Dell Inc. Microsoft and Windows are registered trademarks of Microsoft Corporation in the U.S. and other countries. Other trademarks and trade names are used to identify the entities claiming the marks and names of their products. Dell Inc. disclaims any proprietary interest in trademarks and trade names other than its own. © Copyright 2004 Dell Inc. All rights reserved.