



# Certified PowerVault – PowerConnect Reference Configurations

## Unified Storage Solution For Windows and Linux Servers

(Redundant LAN switches version)

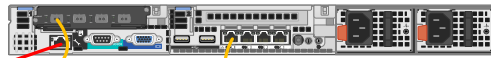
### 1 Gb Ethernet environment

- Any Dell Server or other
- 2 PowerConnect 6224 switches
- 2 PowerConnect 5524 switches
- 2 PV NX3500
- 1 PV MD32x0i (or PV MD36x0i)

This configuration based on Dell's PowerVault NX3500 Clustered NAS provides an affordable unified storage solutions for Windows and Linux Server environments. It provides File (CIFS/NFS) and Block storage that can grow together with your needs, by simply adding hard drives to one or more of our PowerVault MD32x0i or MD36x0i arrays.

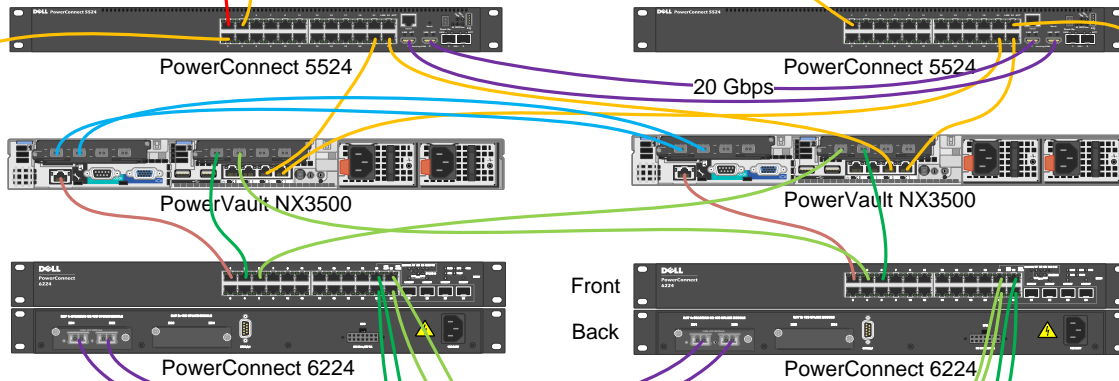
Hardware, Installation, Installation Support, Proactive Maintenance, Monitoring and Training services as well as array's storage capacity are not discussed/included in this configuration.

### Windows or Linux Servers



Server running any of the OS above

### Redundant Lan Switches

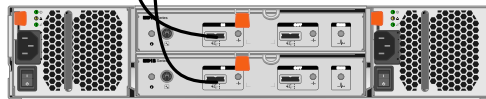


Replace with 5548 for additional capacity. See Support Matrix below

Replace with 6248 for additional capacity. See Support Matrix below



MD32x0i



MD1200

Optional: Up to 4 expansion arrays

### File (NFS/CIFS) Storage Configuration

- iDrac
- LAN
- iSCSI SAN
- iSCSI Standby SAN
- ISL (Stacking)
- Internal Network A
- Internal Network B

**Support Matrix:**

**PowerConnect 5524 Switch**

Servers: 1-14

**Support Matrix:**

**PowerConnect 5548 Switch**

Servers: 1-30



**Certified PowerVault – PowerConnect  
Reference Configurations**

**Unified Storage Solution  
For Windows and Linux Servers**

(Redundant LAN switches version)

**1 Gb Ethernet environment**

- Any Dell Server or other
- 2 PowerConnect 6224 switches
- 2 PowerConnect 5524 switches
- 2 PV NX3500
- 1 PV MD32x0i (or PV MD36x0i)

**Bill of Materials  
Summary**

OPTIONAL components indicated in **BROWN**

Product	SKU	Qty	Comments
PowerConnect 6224 or PowerConnect 6248 Stacking Module, 48Gbps, Includes 1m Stacking Cable	222-6710 222-6714 320-5171	2  1	
RPS-600 External Redundant Power Supply	310-1803	1	OPTIONAL (Support four 6224 or 6248 switches)
PowerConnect 5524 or PowerConnect 5548 Stacking Cable,HDMI,0.3M,PCT5500	225-0847 225-0849 331-2294	2  2	
RPS720 Redundant Power Supply	331-2286	1	OPTIONAL (Support 4 5524 or 5548 switches)
PowerVault NX3500 DSFS NAS	225-0812	2	
Power Cord NEMA 5-15P to C13	310-8509	2	
No Rack Rails or Cable Mgmt ent Arm	330-3522	2	
Replication License Key	331-2146	2	
Snapshots License Key	331-2147	2	
Dell Scalable File System	421-4820	2	
PowerVault NX3500 MultiPack	225-0908	1	
PowerVault NX3500 DAO/BCC Documentation	331-2499	1	
System ordered as part of Multipack order	330-4118	1	
Power Cord C13 to C14	330-3151	6	
500W, 208/230V Backup Power Supply	331-2434	1	
ReadyRails Sliding Rails w/o Cable Mgmt Arm	330-4139	2	
PowerVault MD3200i, Rkmnt,iSCSI,12Bay,Dual HD Multi-Select	224-8206 341-4158	1 1	Can be replaced by any MD32x0i or MD36x0i arrays
Bezel Option, MD3200i	313-9401	1	
RackRails, RapidRails for Dell Rack	330-6048	1	
Power Cord NEMA 5-15P to C14	310-9965	2	
Lic. Key Snapshot (8 per LUN) and Virtual Disk	421-3439	1	
500GB 7.2K RPM 6Gbps, 3.5in Hotplug Hard Dr	342-0118	12	Can use different amounts and type of hard drives
PowerVault MD1200,Rkmnt,SAS,12 Bay HD Multi-Select	224-7198 341-4158	1 1	OPTIONAL (Up to 4 of this expansion arrays)
2 Enclosure Management Modules, SAS only	330-6058	1	
Bezel Assembly	313-8850	1	
Rack Rails, RapidRails for Dell Rack	330-6048	1	
6Gb SAS Cable, 4 Meters	330-6059	2	
PERC H800A, SAS, Ext 512MG	341-9869	2	
Power Cord, NEMA 5-15P to C14, 15 amp	310-9965	2	
500GB 7.2K RPM 6Gbps, 3.5in Hotplug Hard Dr	342-0118	12	