

Dell EMC PowerEdge rack servers help you build a modern infrastructure that minimizes IT challenges and drives business success. Choose from a complete portfolio of 1-2-and-4 socket rack servers to deliver high core density for your traditional applications, virtualization and cloud-native workloads. Enhanced memory speeds, faster NVMe storage options¹ and BIOS tuning allows you to match performance to your workload for ultimate efficiency.

| PowerEdge Rack Servers | R6525 | R7515 | R6515 | R940 | R940xa | R840 | R740xd | R740 | R740xd2 | R640 | R540 | R440 | R340 | R240 |
|--------------------------------|---|--|---|----------------------|--|---|---|---------------------------------|---|--|-----------------------------------|--|---|---|
| Key attributes | Dense virtualization | Powerful performance and scalability | High density compute | Powerful performance | Extreme acceleration | Turbocharge data analytics | Scalable storage performance | Optimal application performance | Enterprise content server | Performance and density | Balanced and adaptable | Scale-out computing | Accelerate business growth | Compute made simple |
| Target workloads | HPC, Dense VDI and Virtualization | SDS, Virtualization and Data Analytics | Virtualization, HCI and NFV | In-memory databases | GPU database acceleration and machine learning | Data-intensive workloads, HFT and dense virtualization | SDS, service providers, and big data servers | VDI and cloud workloads | Media streaming and SDS | Dense scale-out data center computing and storage | Mail messaging and virtualization | HPC, web tech and scale-out infrastructure | ROBO productivity and data-intensive applications | Small business and service provider workloads |
| Type of processor | 2 x 2 nd Gen EPYC™ Processors; up to 64 cores per Processor | 1 x 2 nd Generation AMD EPYC™ Processor; up to 64 cores per Processor | 4 x 2 nd Generation Intel® Xeon® Scalable processors | | | 2 x 2 nd Generation Intel® Xeon® Scalable processors | | | | 1 x Intel Xeon E-2200, Intel Core i3®, Intel Pentium®, or Intel Celeron® processor | | | | |
| Memory (DDR4 DIMM slots & max) | 32 (4TB) | 16 (2TB) | | 48 (15.36TB) | | | 24 (7.68TB) | | 16 (1TB) | 24 (7.68TB) | 16 (1TB) | | 4 (64GB) | |
| Disk drives up to: | 8 x 2.5" 4 x 3.5" | 12 x 3.5" 8 x 3.5" | 8 x 2.5" 4 x 3.5" | 24 x 2.5" | 32 x 2.5" | 26 x 2.5" | 32 x 2.5" or 18 x 3.5" | 16 x 2.5" or 8 x 3.5" | 26 x 3.5" or 16 x 3.5" + 10 x 2.5" ² | 12 x 2.5" or 4 x 3.5" | 14 x 3.5" | 10 x 2.5" or 4 x 3.5" | 8 x 2.5" or 4 x 3.5" | 4 x 2.5" ² or 4 x 3.5" |
| NVMe drives up to: | 12 | 24 | 10 | 12 | 4 | 24 | | N/A | | 10 | N/A | 4 | N/A | |
| Gen4 PCIe slots up to: | 3 | 2 | 1 | N/A | N/A | N/A | N/A | | N/A | N/A | N/A | N/A | N/A | |
| Gen3 PCIe slots up to: | N/A | 2 | 1 | 13 | 12 | 6 | 8 | | 5 | 3 | 5 | 2 | 2 | |
| Accelerator support up to: | 2 x SW | 4 x SW; 1 x FPGA | 2 x SW | N/A | 4 x DW GPUs or 4 x DW or 8 x SW FPGAs | 2 x DW GPUs or 2 x SW or DW FPGAs | 3 x DW or 6 x SW GPUs or 3 x DW or 4 x SW FPGAs | | N/A | 1 x SW GPU or 1 x SW FPGA | N/A | | | |
| Rack height (U) | 1 | 2 | 1 | 3 | 4 | 2 | | | | 1 | 2 | 1 | 1 | |
| Integrated security: | TPM 1.2/2.0 optional, Digitally Signed Firmware, Chassis Intrusion Alert and Secure Boot being standard security on all racks. Integrated security features such as Silicon Root of Trust, System Lockdown and System Erase come standard on all racks. | | | | | | | | | | | | | |



"We'll save 35 percent on a five-year TCO with the Dell EMC VDI solution. The PowerEdge rack servers were ready to go out of the box for hosting our storage requirements. We saved 30 percent compared to a standalone SAN."
- Bruce Salisbury IT Director, Capital Area Human Services



"We can deploy our PowerEdge servers in minutes because iDRAC is always on and integrates with Dell EMC OpenManage..."
- Aldo Armiento, Chief Technology Officer, immobiliare.it

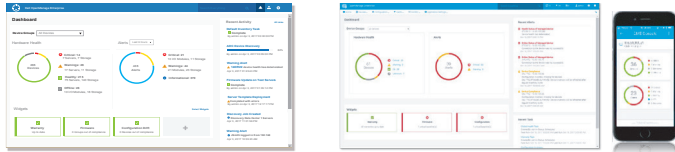


"Dell EMC PowerEdge servers are the foundation of the work we do here. They provide the automation, the security, the flexibility, and the reliability to make sure that we can continue to focus on what we do best as a company."
- Ryan Garipey Co-founder and Chief Technology Officer, OTTO Motors

Dell EMC Solutions

When you buy a Dell EMC server, you get more than just hardware. You get access to IT solutions end-to-end. Dell and EMC bring together industry-leading expertise into a common platform to help you transform your data center. Dell EMC can deliver PowerEdge technology at any level of integration – from a best-in-breed platform, to a pre-integrated fully turnkey hybrid cloud implementation or any step in-between. Combining the PowerEdge server infrastructure with Dell Services and Financial Solutions allows you to modernize your data center faster, more affordably and with less risk.

OpenManage Systems Management



Increase the productivity, reliability and cost effectiveness of your Dell EMC PowerEdge servers while making your IT operations more efficient as well. Designed for use by today's IT Professionals, the Dell EMC OpenManage Enterprise console simplifies, intelligently automates and unifies infrastructure management tasks. Though primarily designed to monitor, configure and update tower, rack and modular PowerEdge servers, OpenManage Enterprise also provides end-to-end infrastructure monitoring capabilities for Dell EMC storage and networking devices plus third-party hardware too. Add OpenManage Mobile to enable your IT Pros to receive and take action on both Dell EMC and third-party hardware events anytime, anywhere. OpenManage Integrations enables both hardware and software infrastructure management without leaving third party consoles such as VMware vCenter and Microsoft System Center.

Dell EMC Services



To fully implement a modern infrastructure, organizations require reliable, comprehensive IT services to drive IT transformations, accelerate adoption of new technologies and maximize productivity.

Architect: Get started with our IT Transformation Workshop to accelerate your transformation to becoming an agile business partner and broker of services to the business.

Implement: The ProDeploy Enterprise Suite helps you get more out of your new technology starting day one. Trust Dell EMC experts to lead deployments from basic hardware installations through planning, configuration and complex integrations.

Manage: The ProSupport Enterprise Suite ensures 24x7 access to senior ProSupport engineers along with automated proactive and predictive service enabled by SupportAssist. Our personalized service and preventative measures help you get ahead of problems before they happen.

Dell EMC Data Center Infrastructure

Dell EMC Data Center Infrastructure (DCI) simplifies and manages critical infrastructure in and around the data center serving the needs of your business. A complete portfolio of racks, power and cooling solutions lets you scale as your data center needs grow.



[Learn more](#) about
Dell EMC server solutions



[Contact](#)
a Dell EMC Expert



[View more resources](#)



Dell EMC Confidential, NDA Required

¹ Not all features are available on all platforms.

² Drives use hybrid carrier to fit in 3.5" drive bay. (For the R740xd2 - a hybrid configuration is available with up to 10 2.5" SSDs)