

# Open Manage

Weiterentwicklung einer Plattform

**Michael Spahn**

Solution Consultant

Datacenter Compute & Solutions



+43 699 14 99 00 90

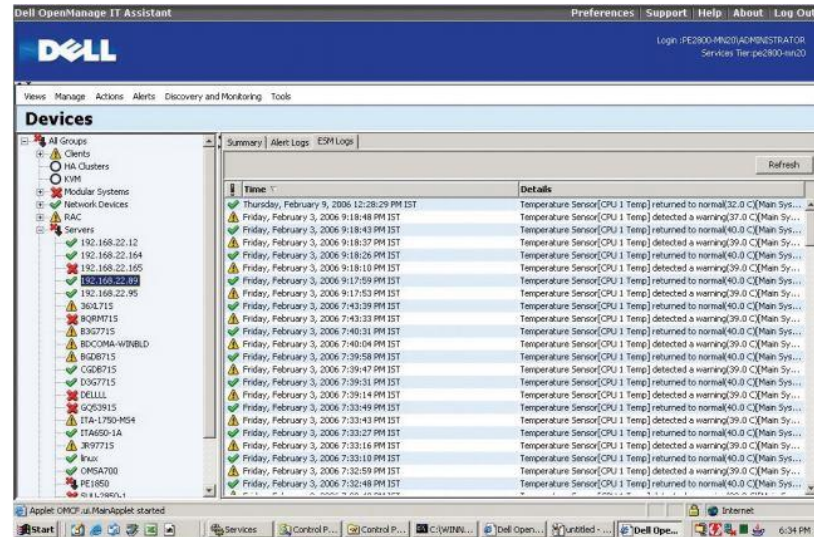
Michael.Spahn@Dell.com

**DELL**Technologies

# Open Manage: die Anfänge

## Some of the new features:

- Uses MSI installer in Windows 2000
- User Authentication is operating system or domain based instead of read/write password in previous versions, + single sign on capability
- New user interface and improved online help
- The UI is web-based and can be accessed from Linux systems
- Troubleshooting tool to help determine why systems are not being discovered correctly.
- Can now schedule tasks and firmware/driver updates.
- Better reports available



Open Manage  
IT Assistant  
2000



# Open Manage: die Weiterentwicklung

- Agent-free monitoring support for 12G servers
- Addition of Sample tasks:
  - Power On Device
  - OMSA Upgrade for Windows
  - Generic command line tasks
  - Remote Server Administrator command
  - IPMI commands
  - Clear System Event Logs (aka SEL logs)
  - RACADM reset

Open Manage  
IT Assistant  
2000

The screenshot displays the Dell OpenManage Essentials web interface. The top navigation bar includes the Dell logo, 'OpenManage Essentials', and links for 'Dell TechCenter | Support | Help | About | Administrator'. Below this is a secondary navigation bar with 'Home', 'Manage', 'Reports', 'Preferences', 'Logs', 'Tutorials', and 'Extensions'. A search bar is located on the right. The main content area is divided into a left-hand navigation tree and a right-hand main panel. The navigation tree shows a hierarchy of devices, including 'All Devices', 'Citrix XenServers', 'Clients', 'HA Clusters', 'KVM', 'Microsoft Virtualization Server', 'Modular Systems', 'PowerEdge Chassis', 'PowerEdge FX', and various server models like 'cmc-AQU 321\_Chassis', 'cmc-brcmssi\_Chassis', 'cmc-STOM 08.us.dell.c', 'cmc-STOM 12\_Chassis', 'cmc-STOM12', 'Servers', 'Switch', and 'cmc-STPST07.us.dell.c'. The main panel is titled 'cmc' and shows a 'cmc-Chassis View' with a 3D perspective of the server chassis. Below this is a 'Device Summary' table and a 'Data Sources' table. The 'Device Summary' table has columns for Health Status, Connection Status, Device Name, Device Type, Model, Service Tag, Asset Tag, and Express ID. The 'Data Sources' table has columns for Global Status, Name, Version, and Description.

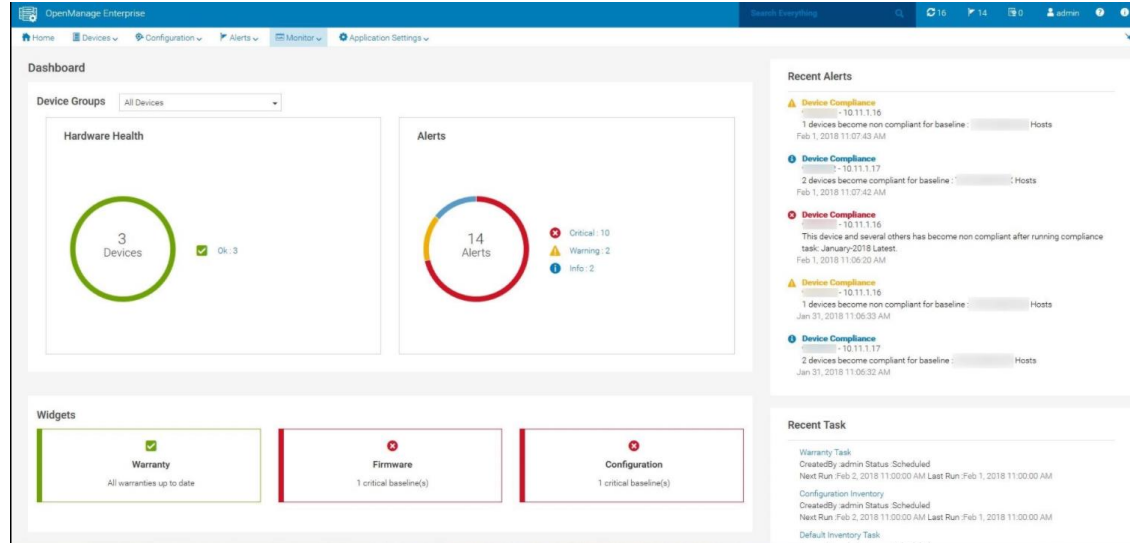
Health Status	Connection Status	Device Name	Device Type	Model	Service Tag	Asset Tag	Express ID
		cmc-STOM 12	CMC	PowerEdge FX2s	STOM 12	00000	6274479

Global Status	Name	Version	Description
	Chassis Management Controller	1.00.X14.201311081865	system component provides a complete set



# Open Manage Enterprise

- Komplet neu geschrieben
- Virtuelle Appliance für
  - ESXi
  - HyperV
  - KVM
- HTML5
- Interne Datenbank
- Firmware baselines
- Integriertes Update
- Bis zur 8000 Geräte



Open Manage  
IT Assistant

2000

Open Manage  
Essentials

2012

Open Manage  
Enterprise

2018



# OME: Stand heute

## New Features in OpenManage Enterprise 3.5

- Two new plugins - OpenManage Enterprise SupportAssist Enterprise plugin and OpenManage Enterprise Update Manager plugin – are supported with this release.
- For catalogs on a Network Share (NFS/CIFS/HTTP/HTTPS), OME can download DUPs from directly from Dell.com; downloading DUPs manually or via DRM is not longer required.
- Log into OME using authorized client identity access tokens issued by OpenID Connect providers: Keycloak and PingFederate (The user type must be configured as part of the client policy management on the OIDC provider).

## Zusätzlich verfügbar:

- Open Manage Integration **Service Now**
- Open Manage Integration Microsoft **System Center**
- Open Manage Integration Microsoft **Admin Center**
- Open Manage Integration **VMWare vCenter**
- Open Manage **Ansible Modules**
- Open Manage **Mobile**





**Michael Spahn**

Solution Consultant

Datacenter Compute & Solutions



+43 699 14 99 00 90

[Michael.Spahn@Dell.com](mailto:Michael.Spahn@Dell.com)